

International symposium for wooden architecture

Renzo Piano Building Workshop



Le Centre culturel Jean Marie TJIBAOU

RPBW





Village 1

Village 2

Village 3

LE RESPECT DU SITE

IMAGE DE REFERENCE TERROIR TRADITIONNEL KANAK



SCHEMAS DE REPARTITION DES FONCTIONS

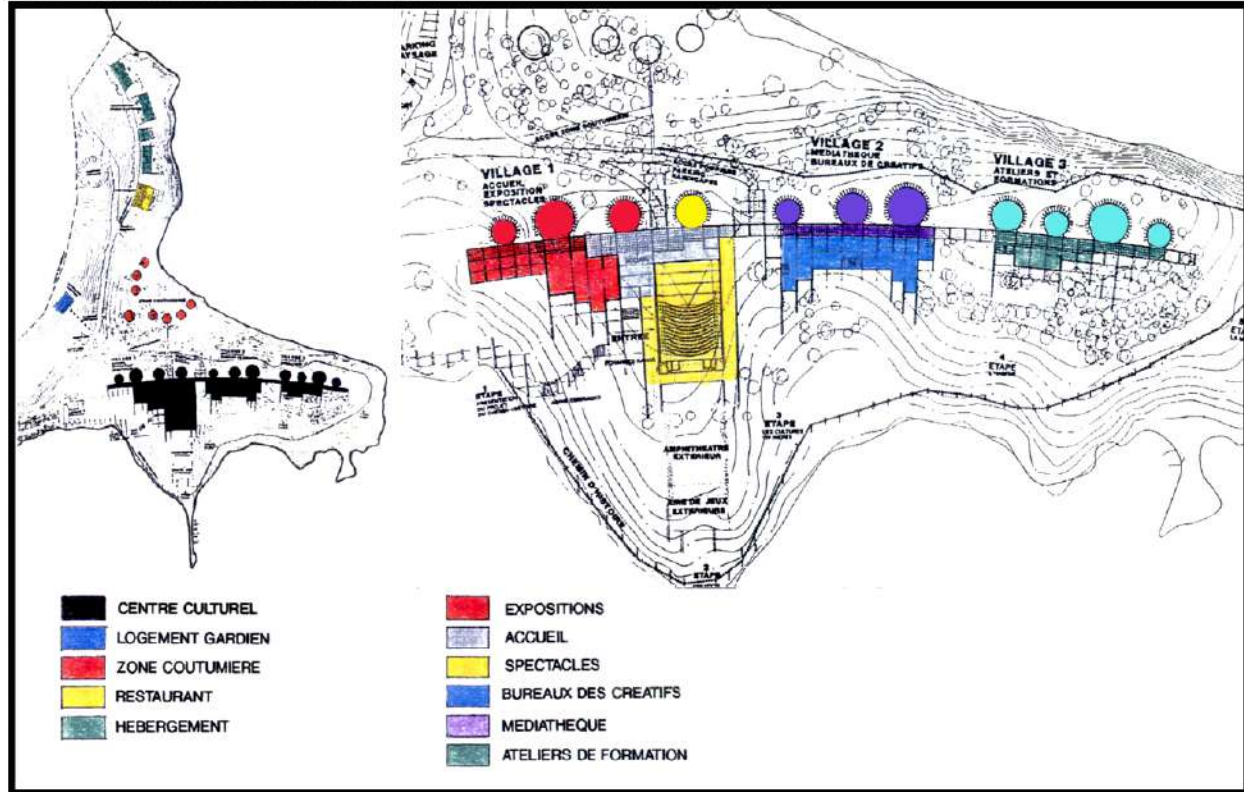
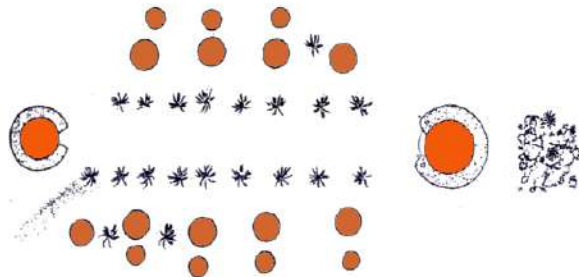
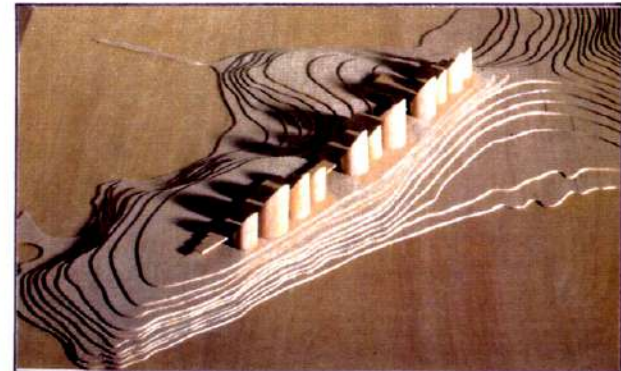
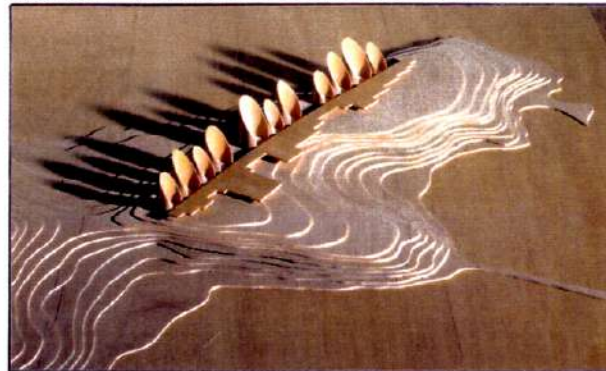


IMAGE DE REFERENCE PLAN D'UN VILLAGE KANAK

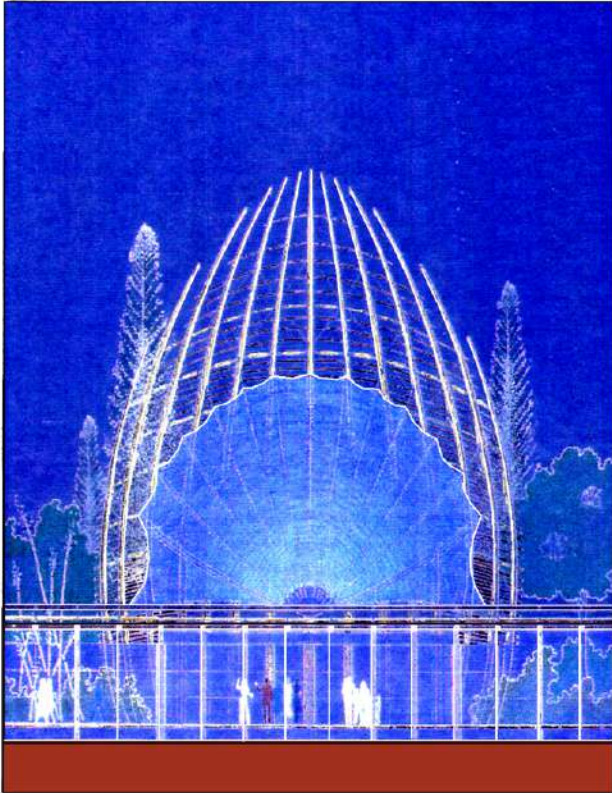


MAQUETTE D'INSERTION DU PROJET DANS LE SITE

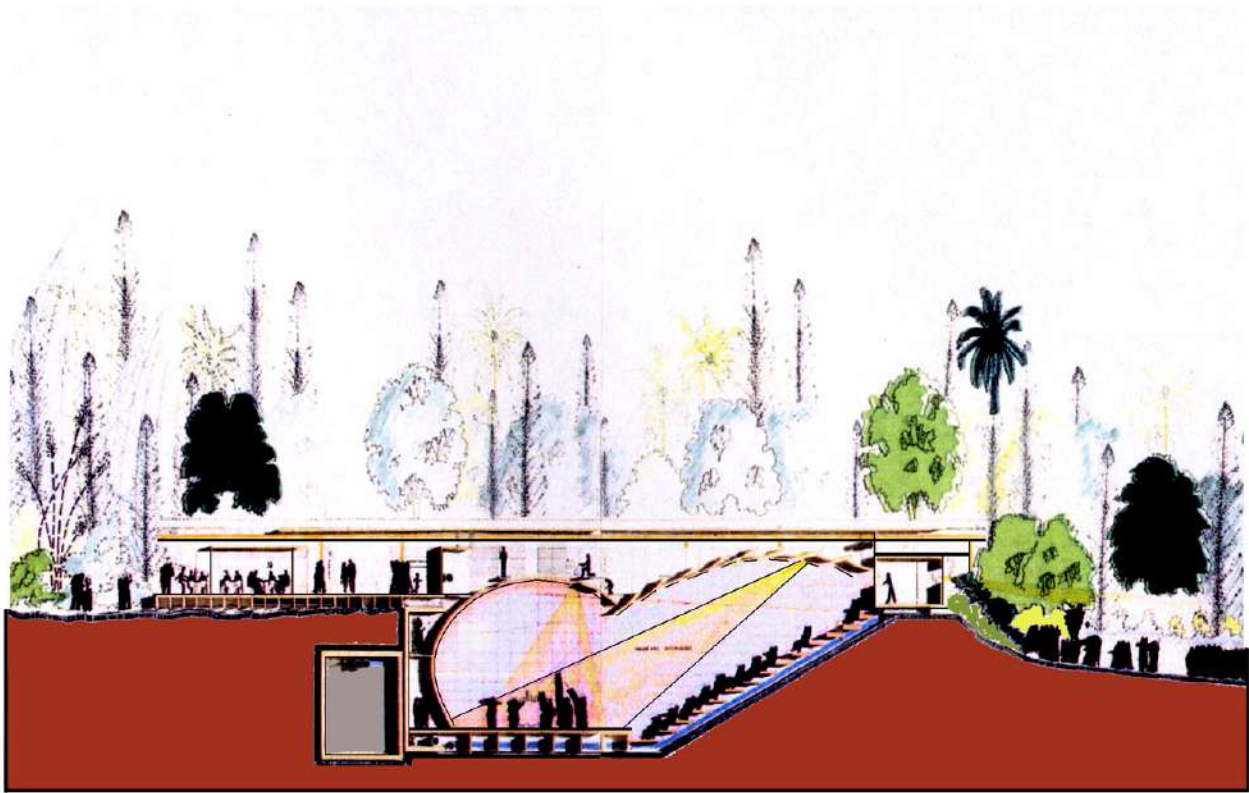


ETUDE DE FAISABILITE – Janvier 1992

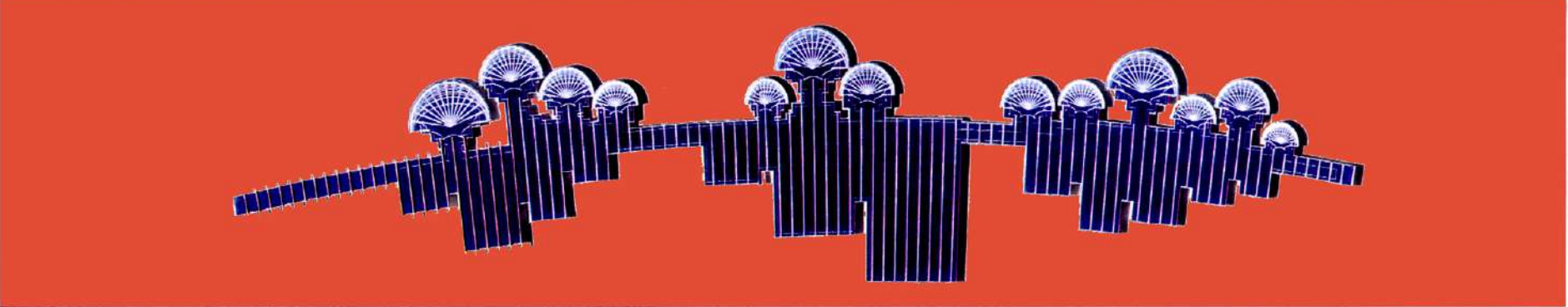
ELEVATION D'UNE CASE COTE ALLEE



COUPE SUR THEATRE ET AMPHITHEATRE EXTERIEUR

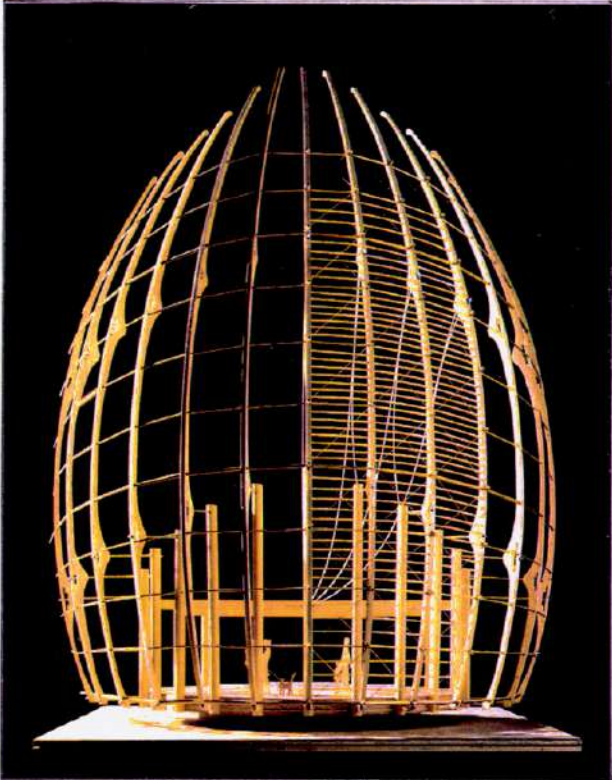


PLAN DE TOITURE



ETUDE DE FAISABILITE – Janvier 1992

MAQUETTE D'ETUDE



COUPE TRANSVERSALE SUR L'ACCUEIL

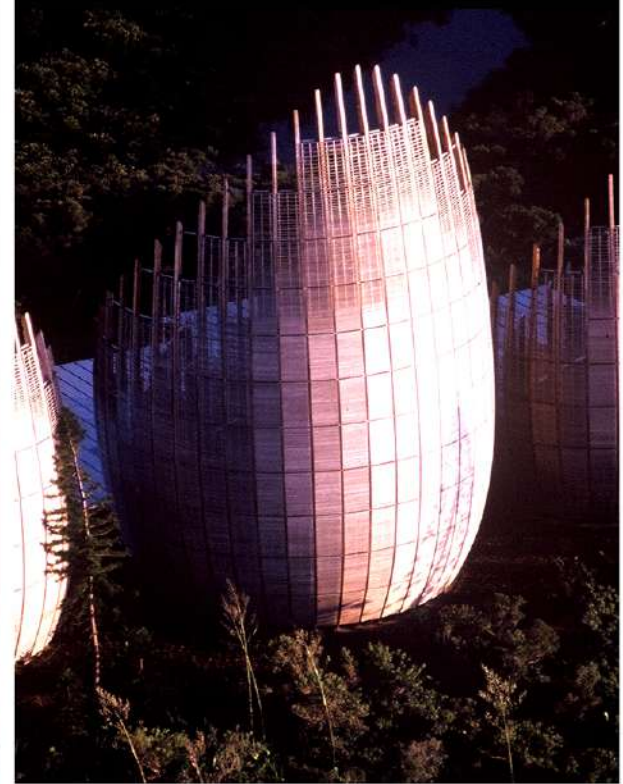
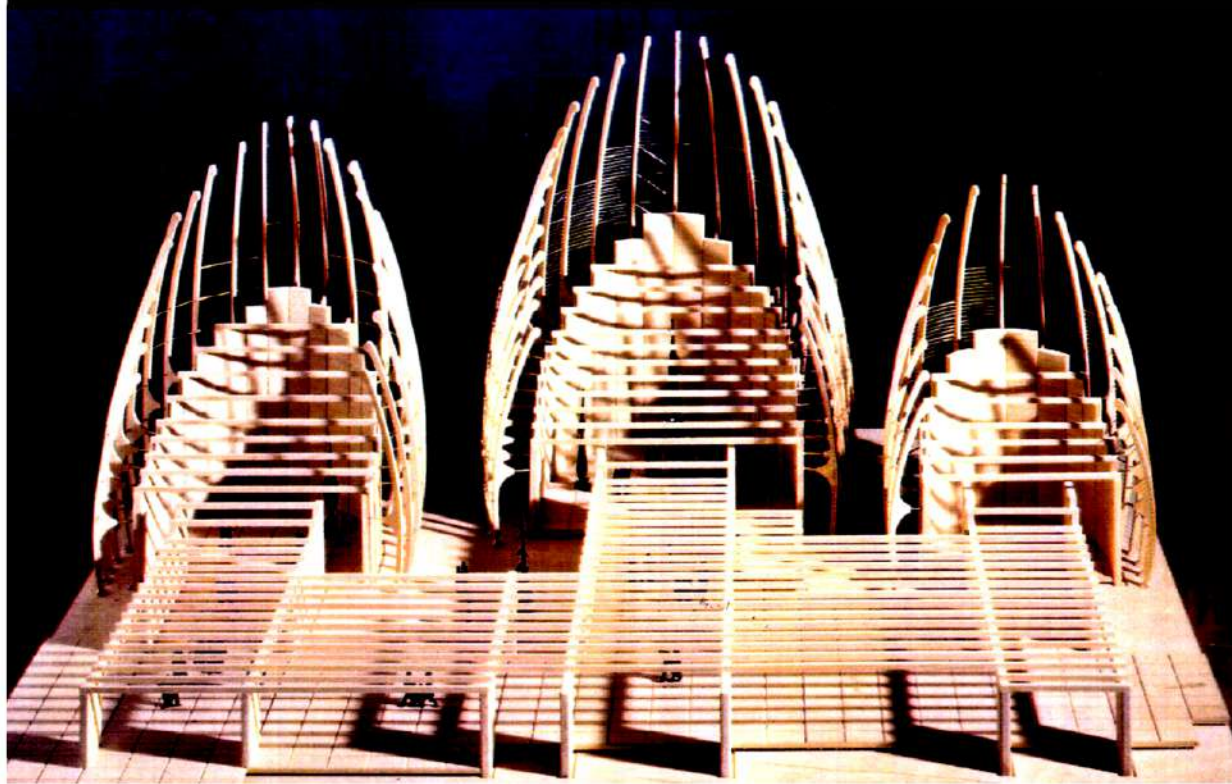


ELEVATION COTE VENTS DOMINANTS / LAGON

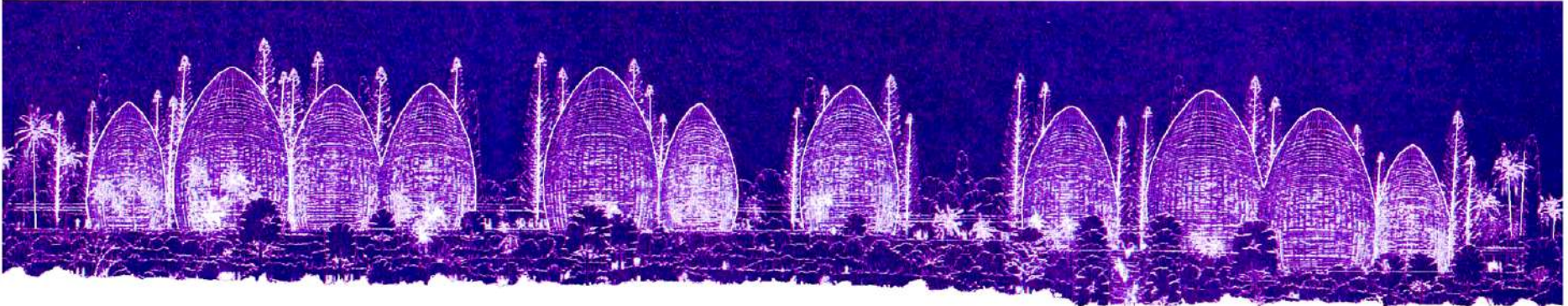


AVANT-PROJET SOMMAIRE - Octobre 1992

MAQUETTE DE TROIS CASES (EXPOSITION NEW-YORK - Décembre 1992)



ELEVATION COTE VENTS DOMINANTS / LAGON



MAQUETTES D'ETUDE – EVOLUTION DE LA CASE

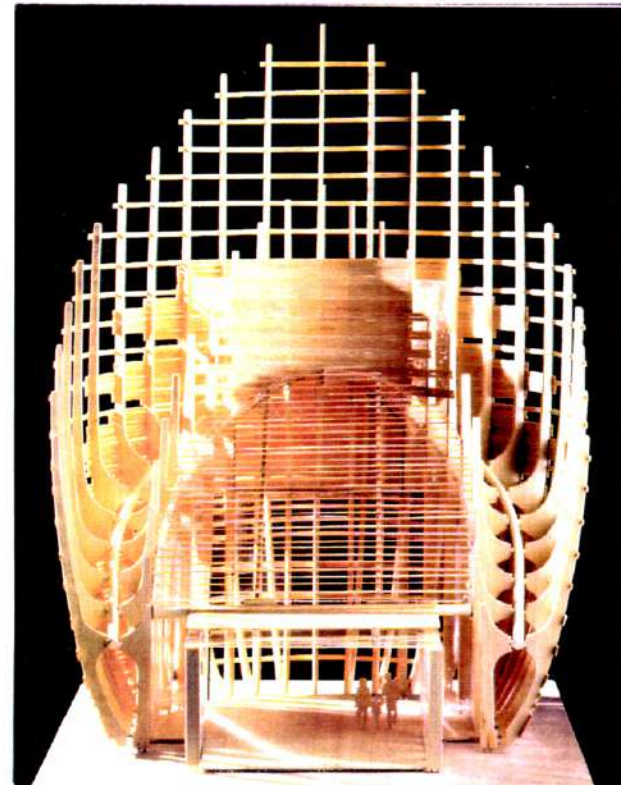
Janvier 1993



Janvier 1993



Fevrier 1993 (MAQUETTE D'ESSAIS AU VENT)



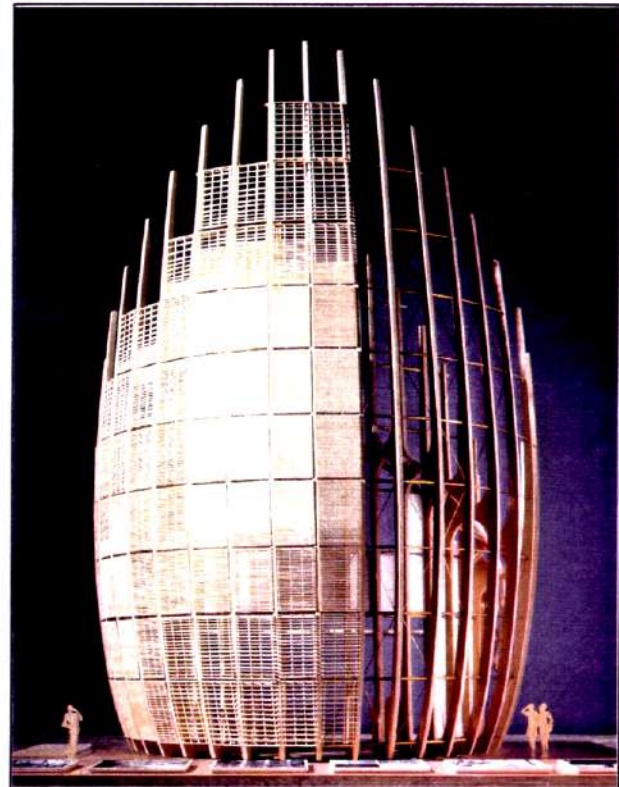
L'OSSATURE DE LA CASE



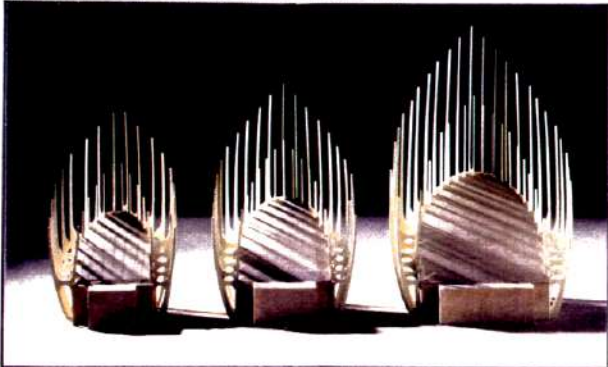
MAQUETTE D'ETUDE - Avril 1993



MAQUETTE D'ETUDE - Avril 1993



MAQUETTE D'ETUDE TROIS TYPES DE CASE

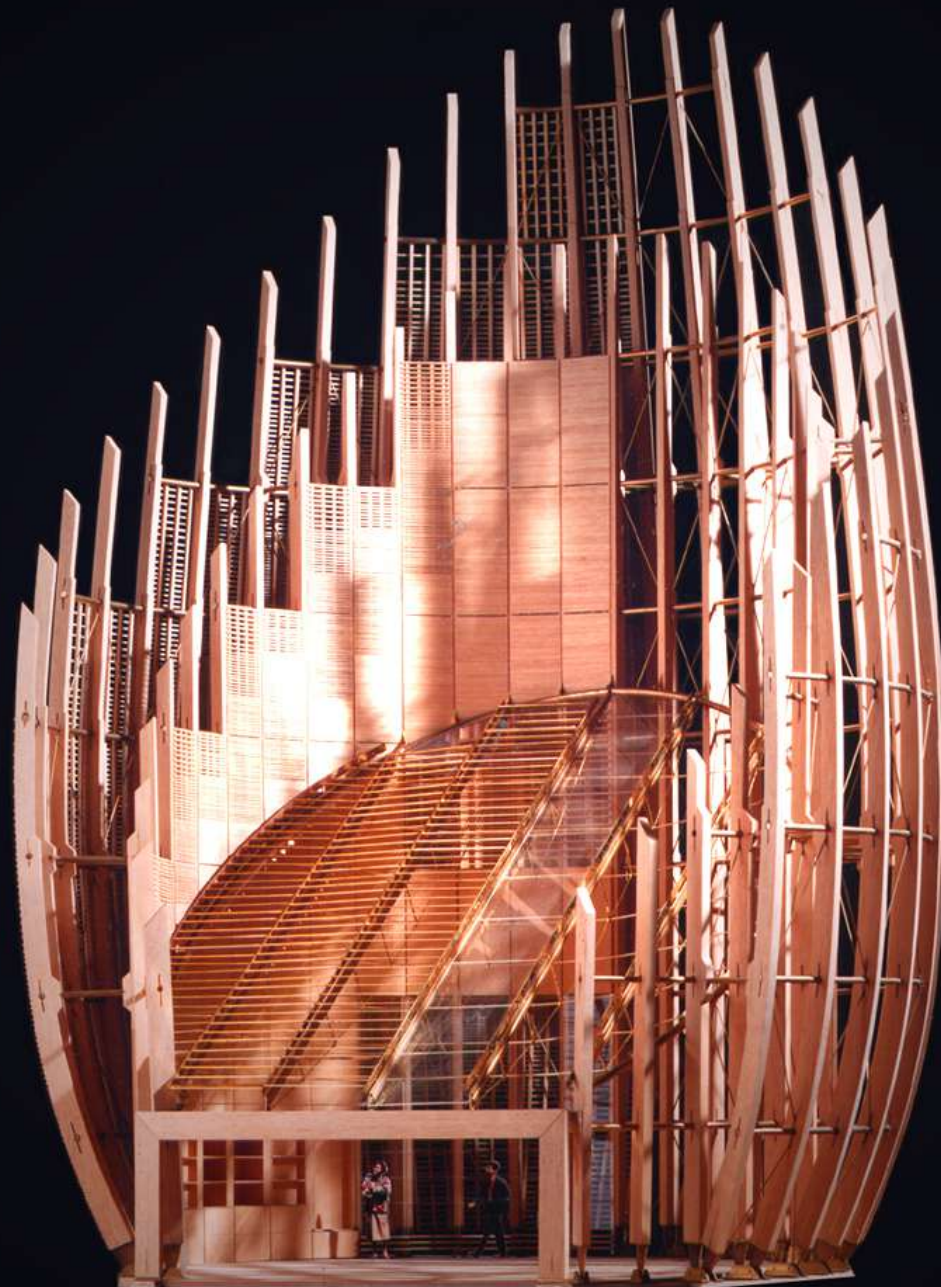


MAQUETTE D'ETUDE PEAU EXTERIEURE

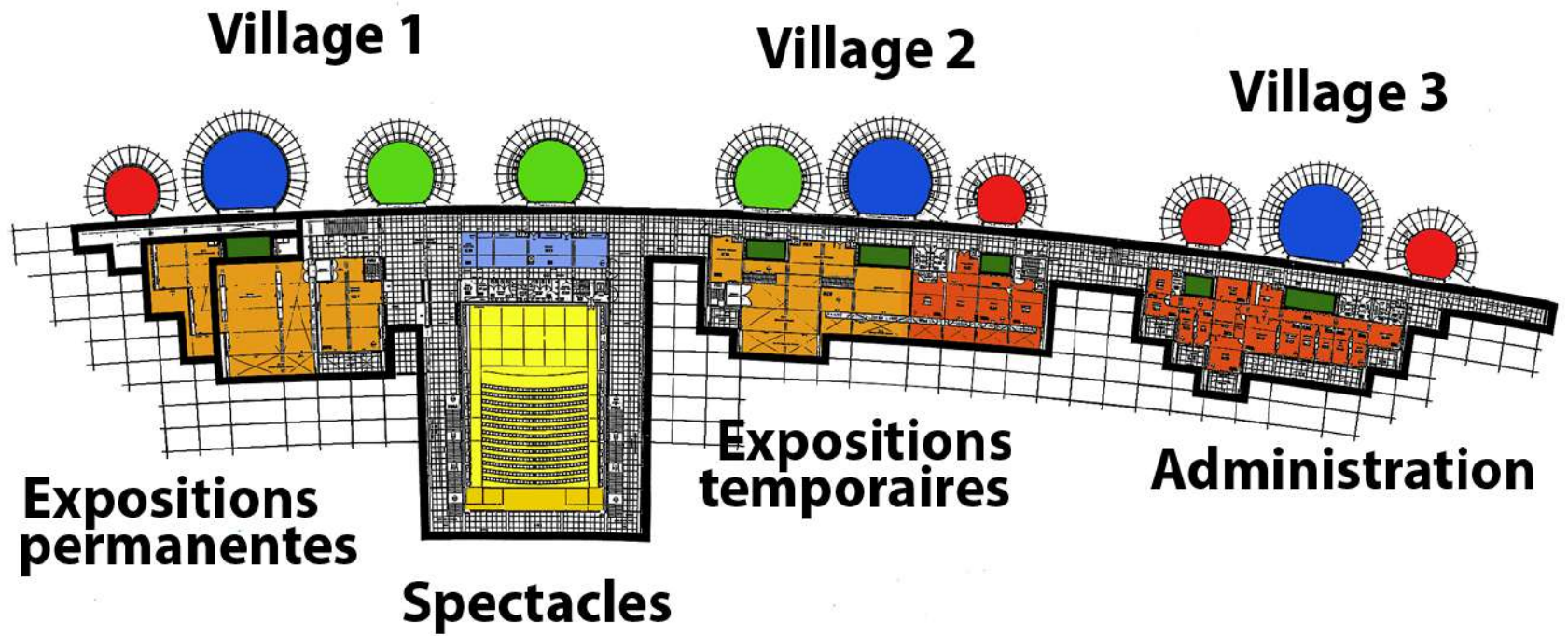


IMAGE DE REFERENCE LOCALE

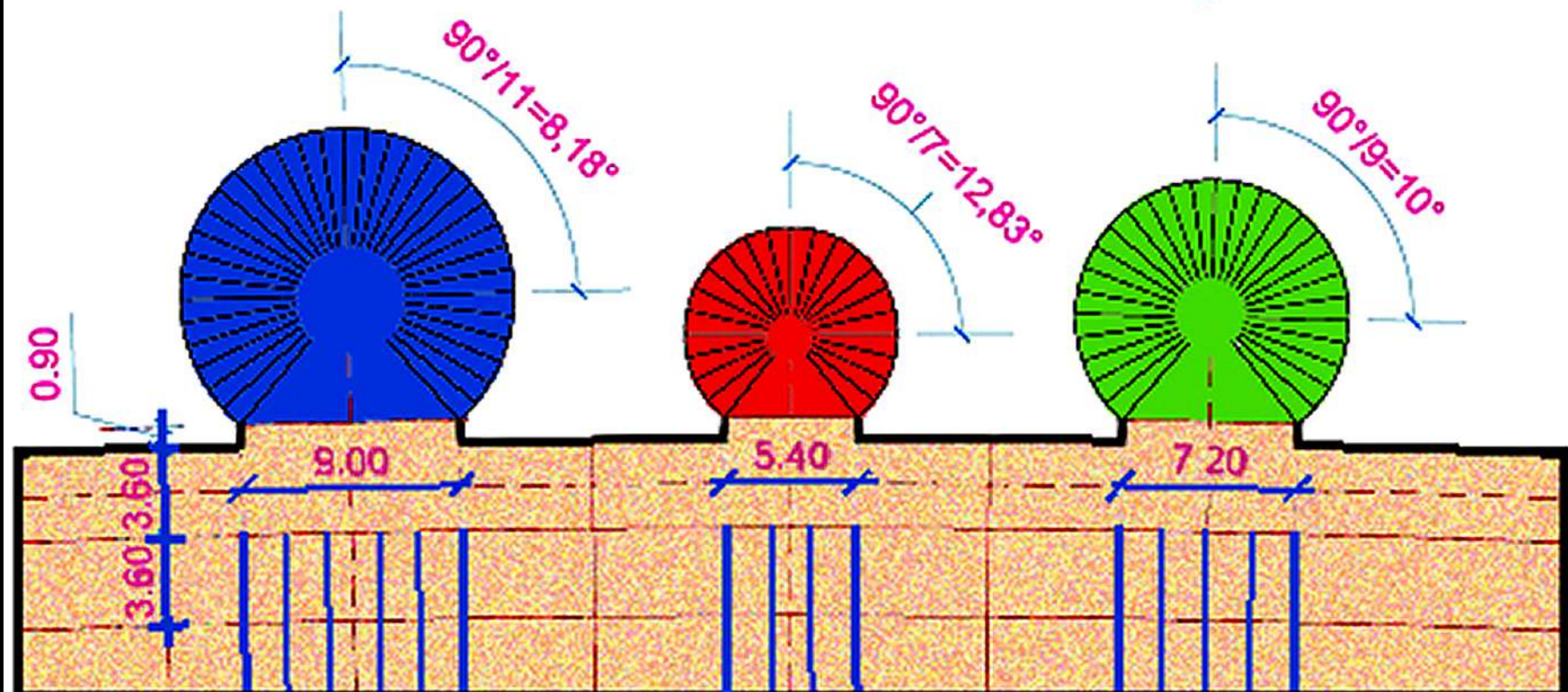




Centre culturel Tjibaou - Maquette de travail RPBW

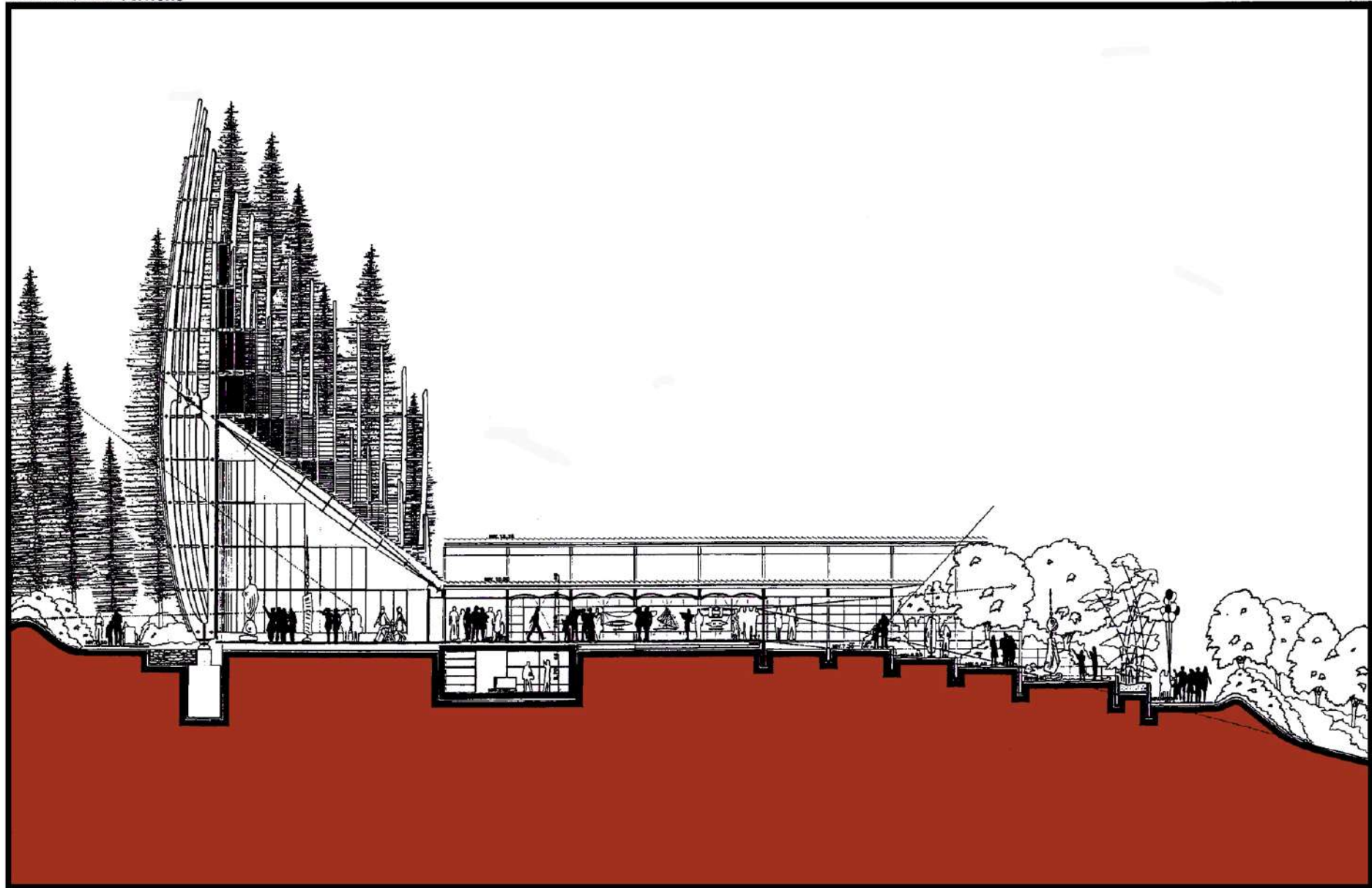


MEME MODULE DE PANNEAU DANS CHAQUE CASE



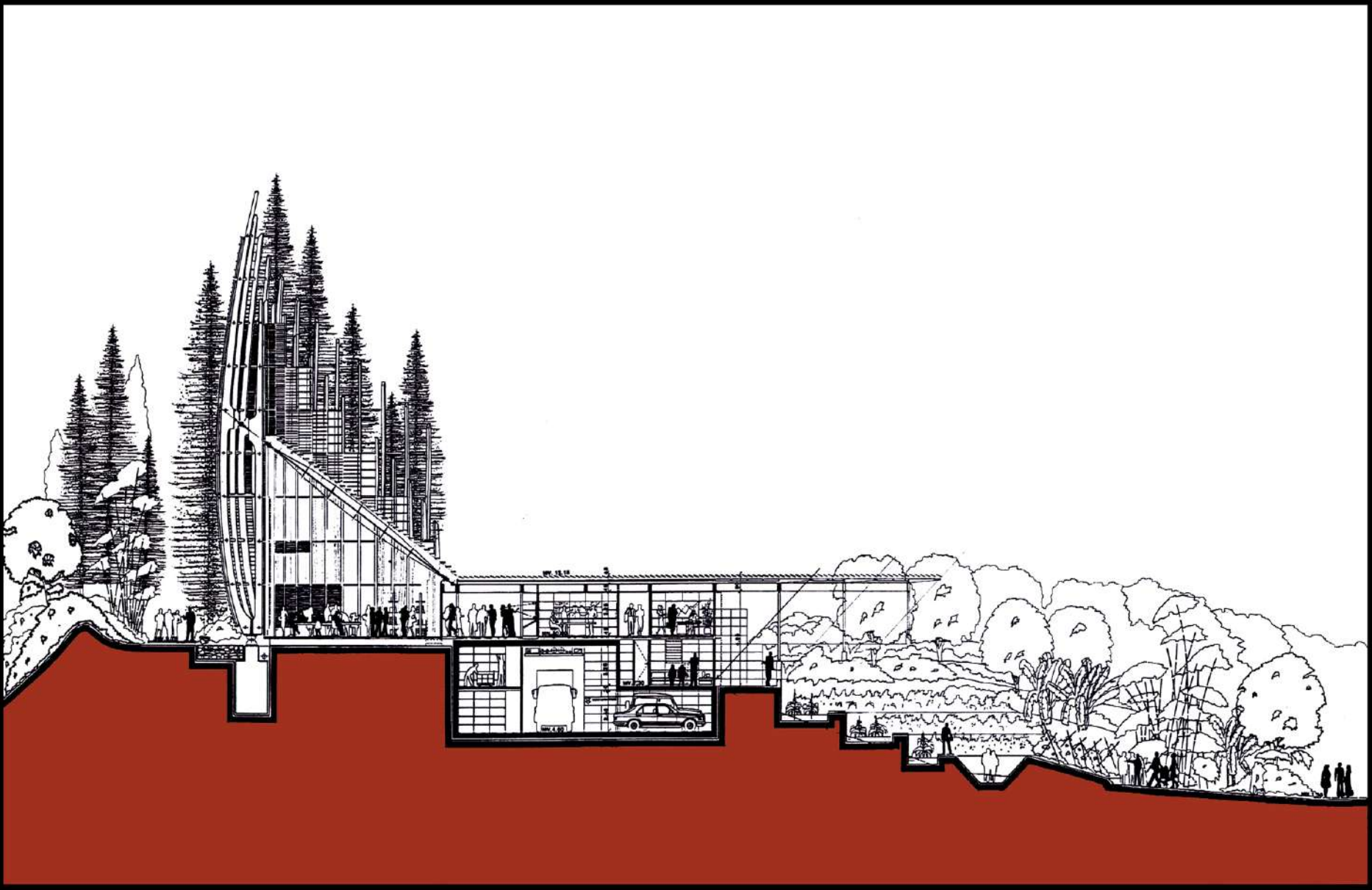
VILLAGE 1 : ACCUEIL, EXPOSITION, CAFETERIA, SPECTACLE

COUPE SUR EXPOSITIONS



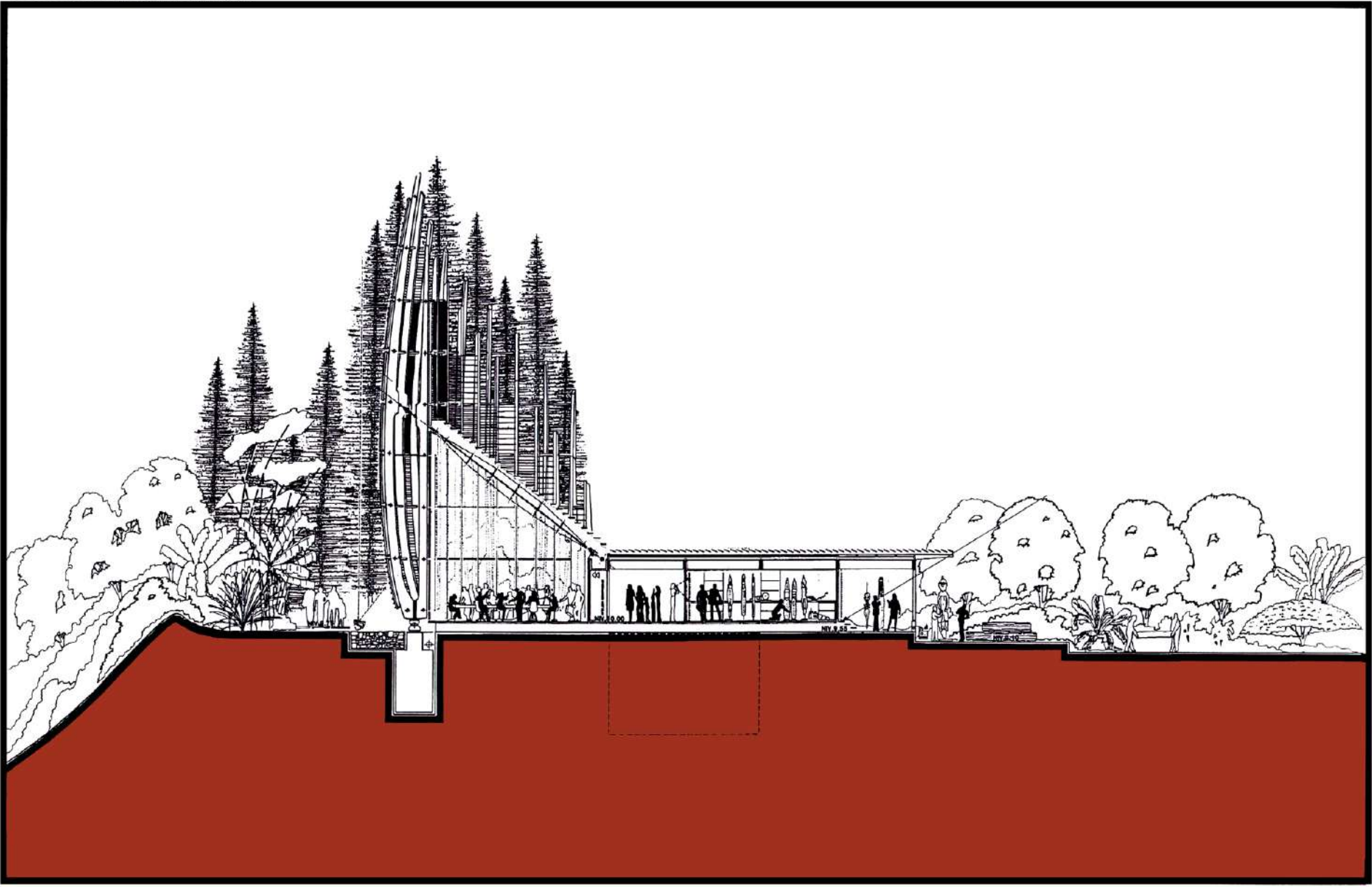
VILLAGE 2 : MEDIATHEQUE, BUREAUX DES CREATIFS

COUPE SUR MEDIATHEQUE ET BUREAUX DES CREATIFS

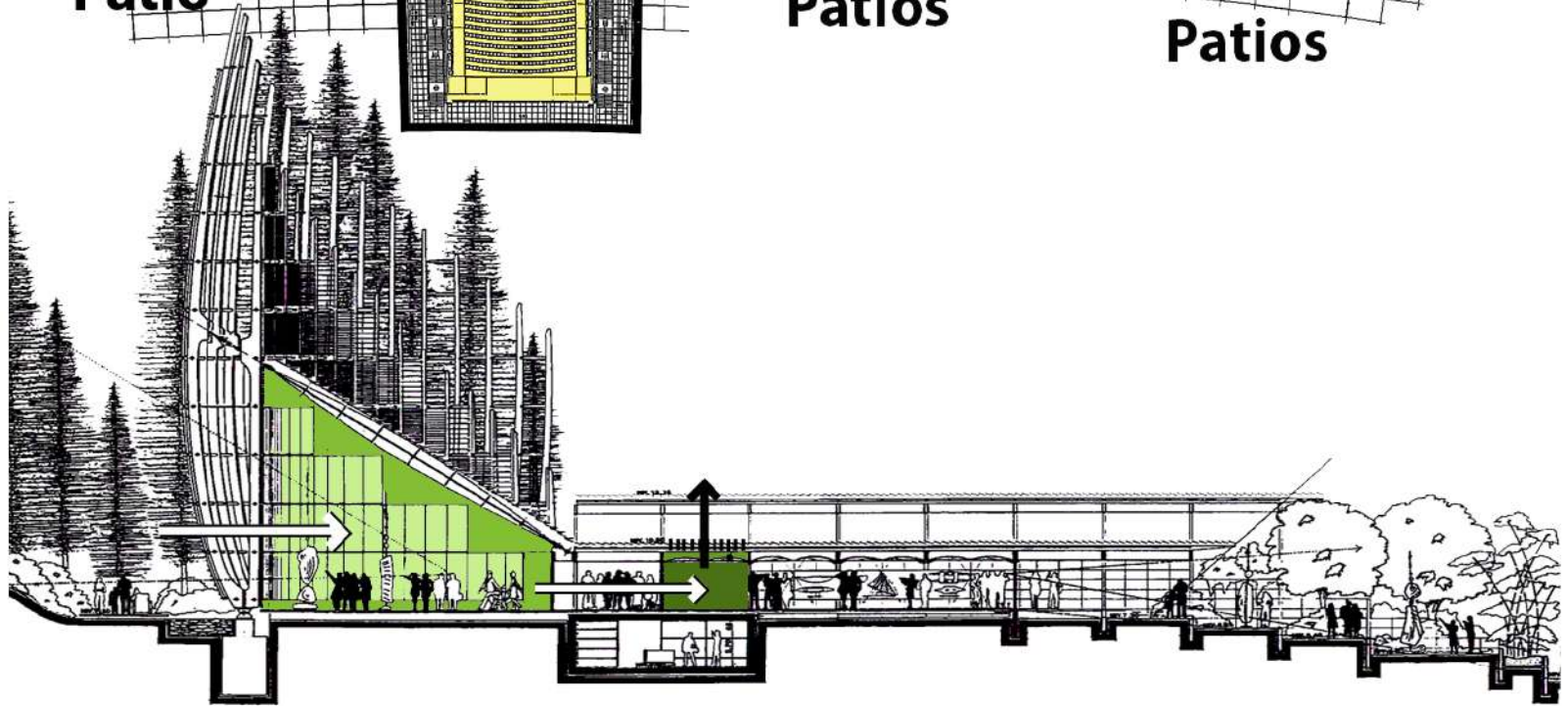
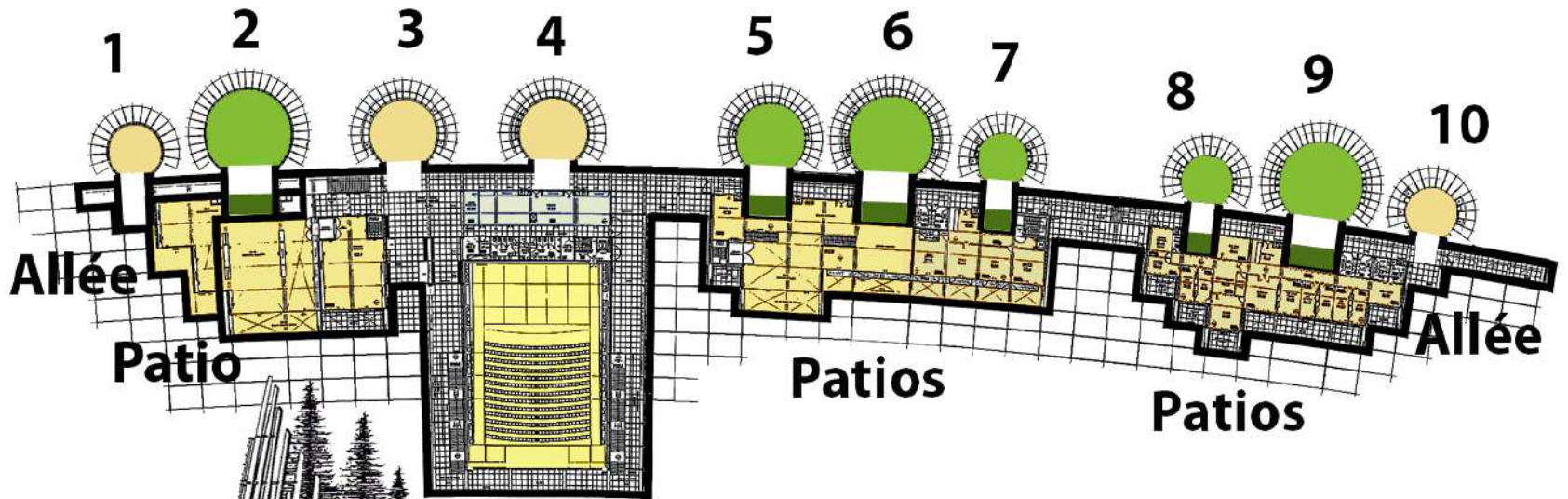


VILLAGE 3 : ATELIERS THEMATIQUES (MUSIQUE, DANSE, PATRIMOINE...)

COUPE SUR ATELIERS THEMATIQUES

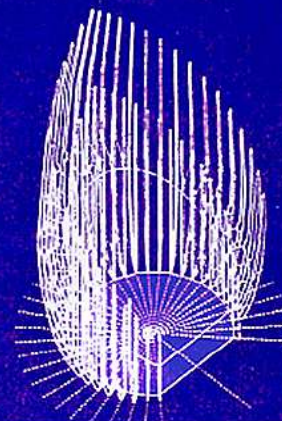
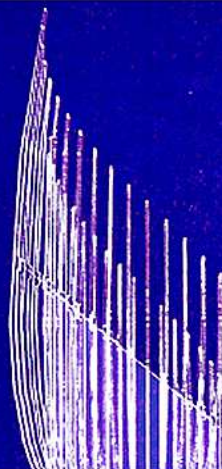
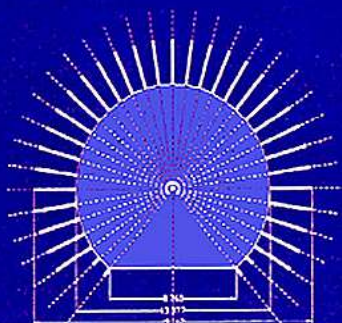


CASES

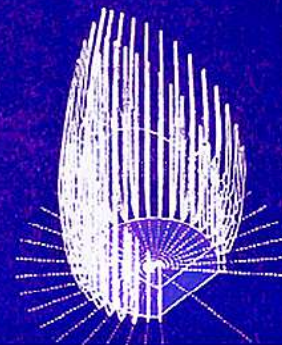
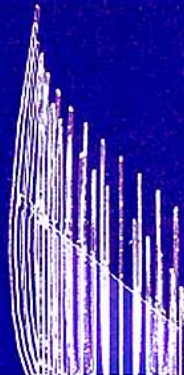
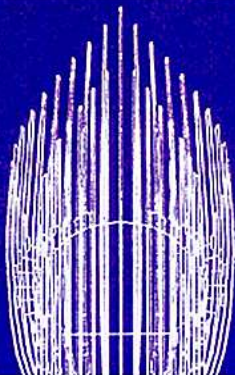
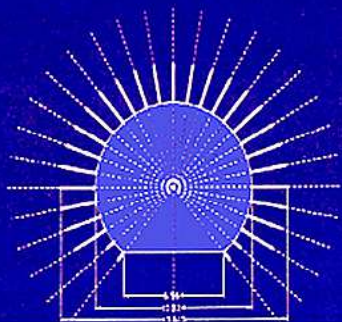




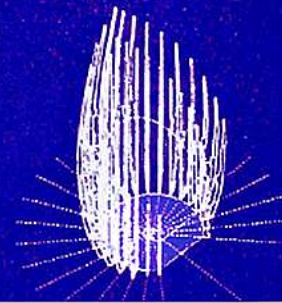
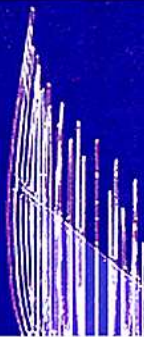
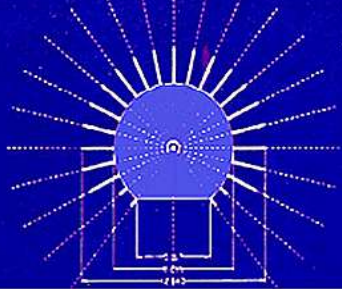
GRANDE CASE - 31 ARCS

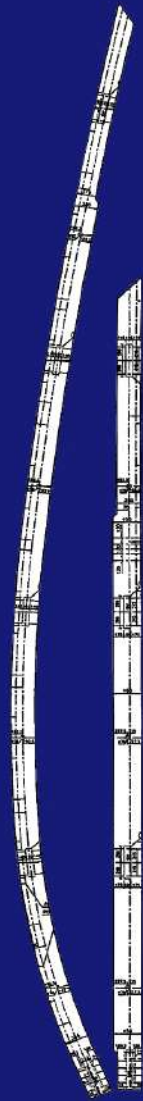


CASE MOYENNE - 25 ARCS

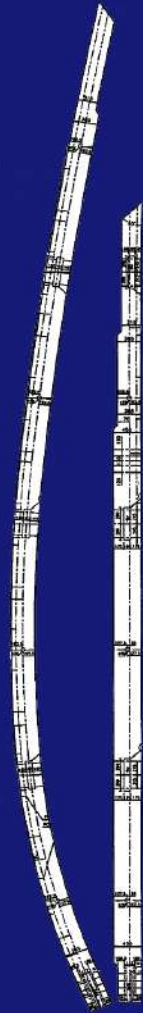


PETITE CASE - 19 ARCS

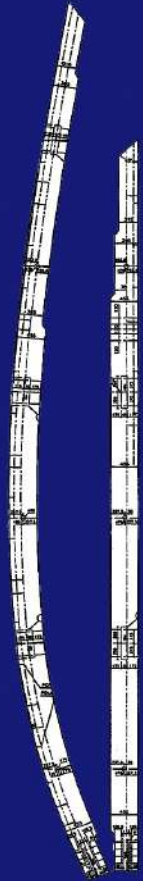




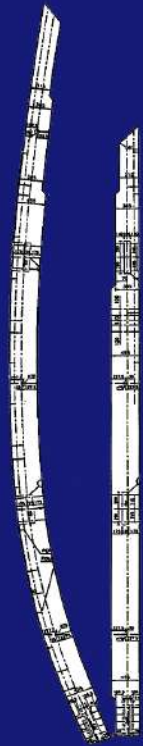
F12



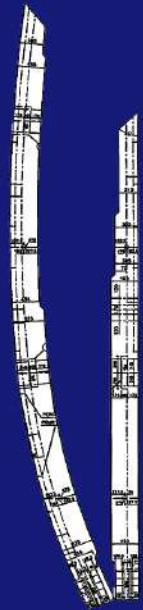
F14



F16



F18

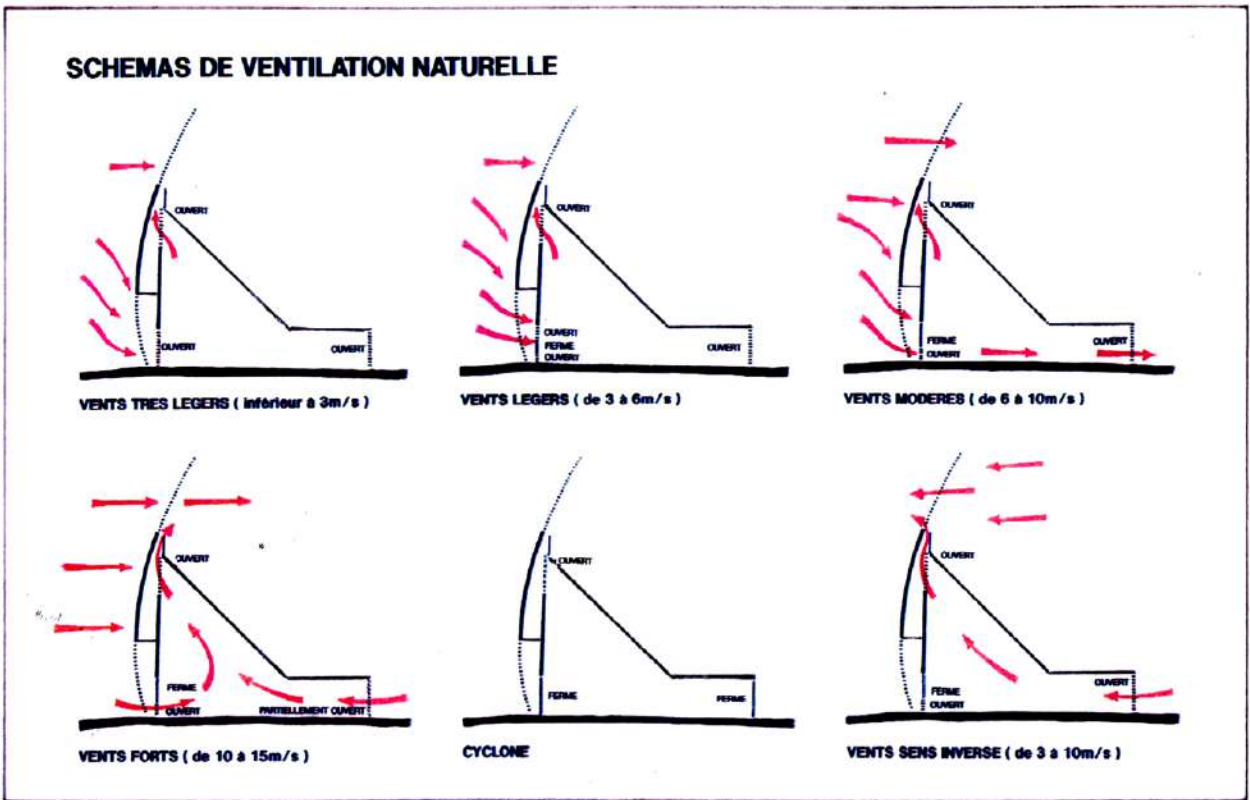


F20

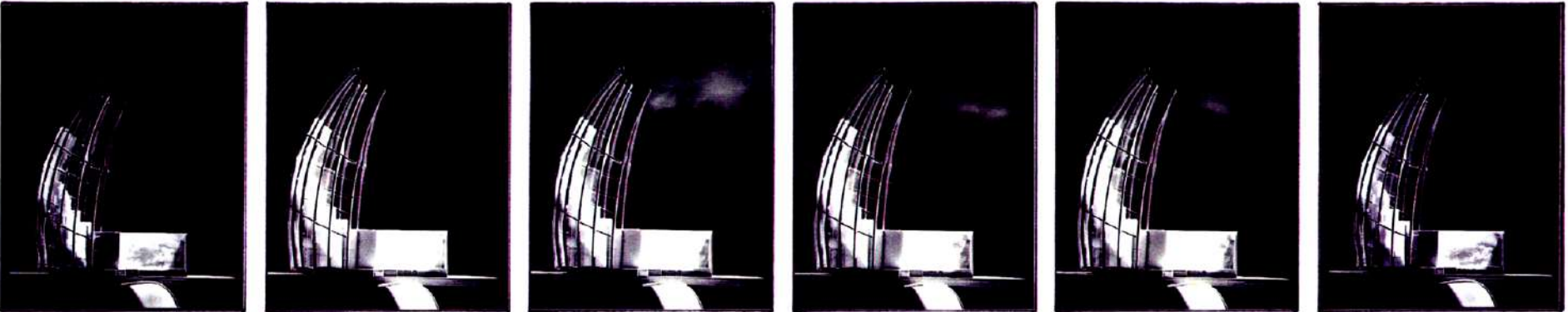


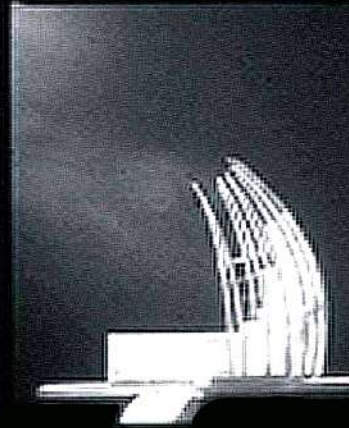
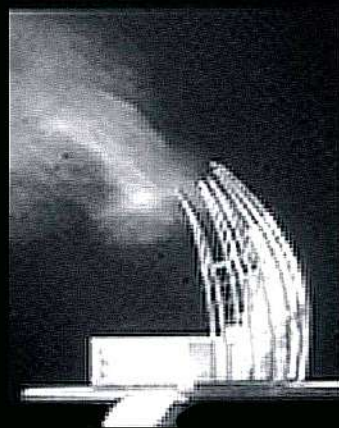
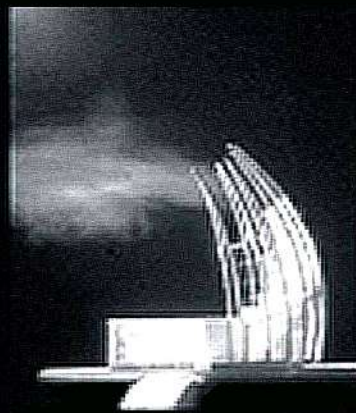
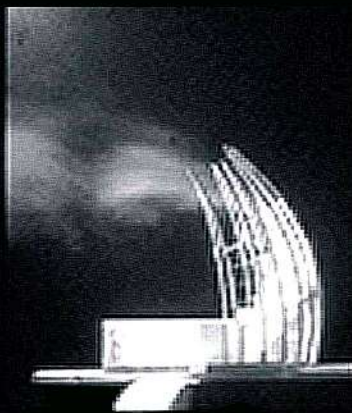
F22

LA VENTILATION NATURELLE



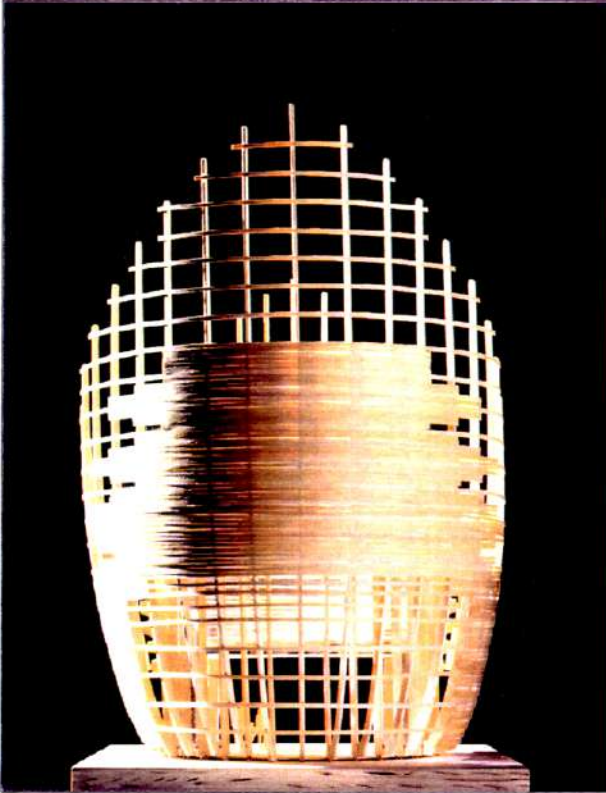
ESSAIS AU VENT





LA VENTILATION NATURELLE

MAQUETTE D'ESSAIS VENTILATION NATURELLE C.S.T.B.

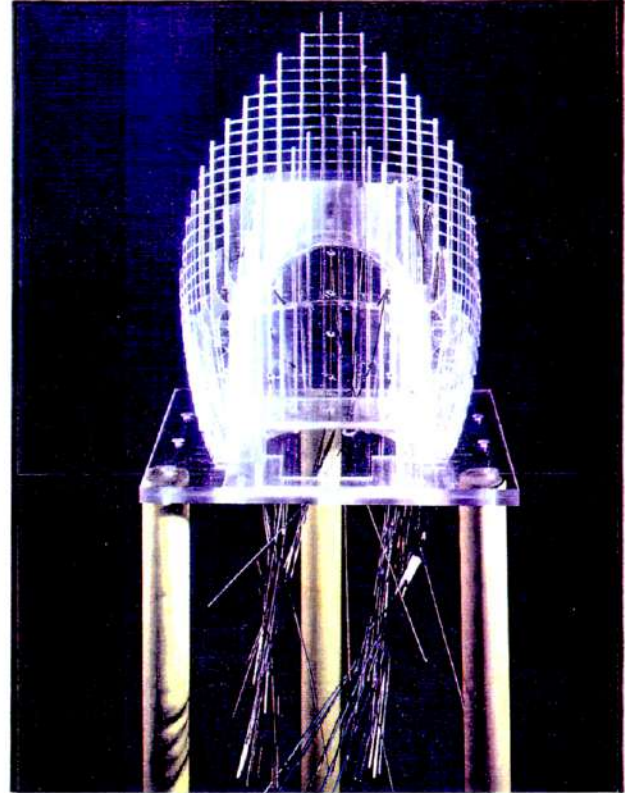


ESSAIS REALISES EN SOUFFLERIE AU C.S.T.B.

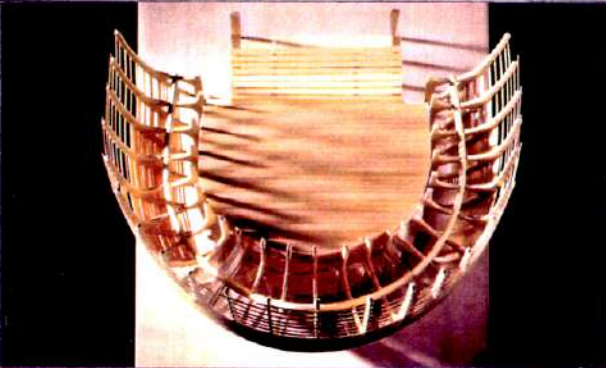


FEVRIER '93

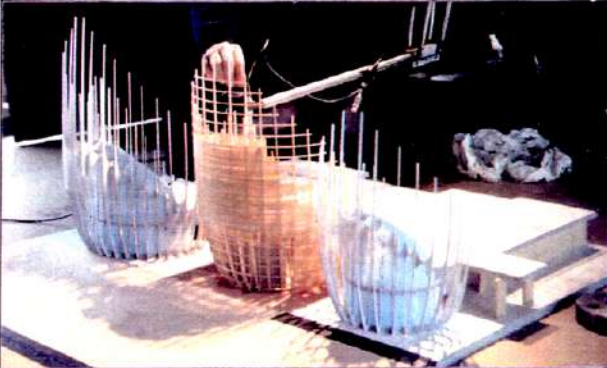
MAQUETTE D'ESSAIS PRESSION AU VENT C.S.T.B. FEVRIER '93



MAQUETTE D'ESSAIS VENTILATION NATURELLE C.S.T.B.

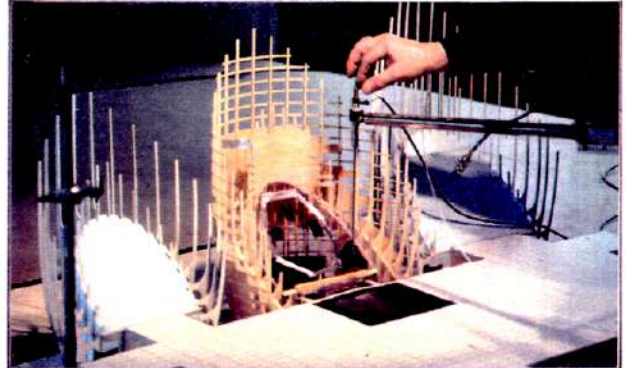


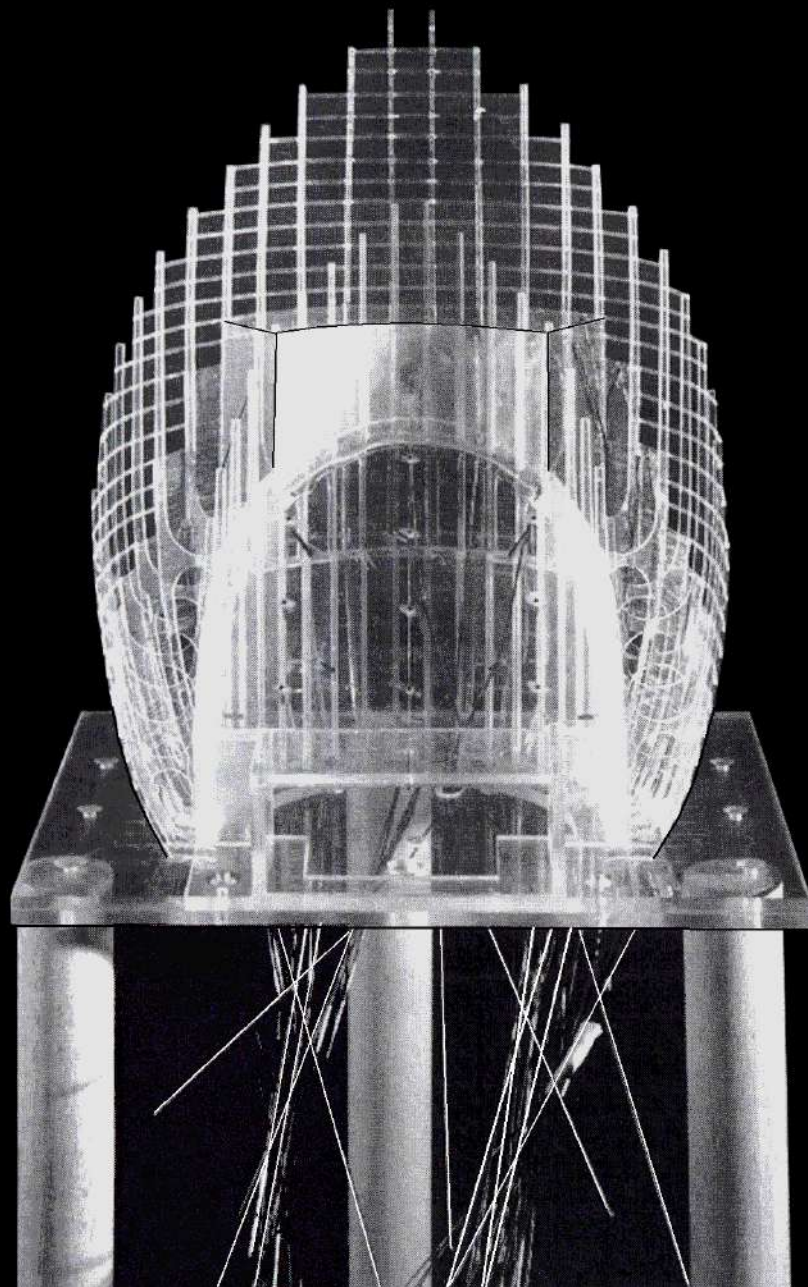
ESSAIS REALISES EN SOUFFLERIE AU C.S.T.B.



FEVRIER '93

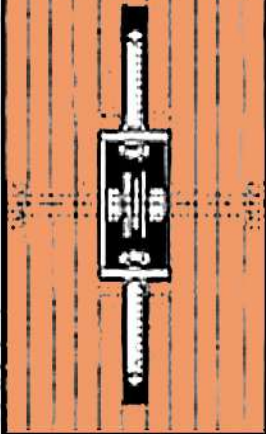
ESSAIS REALISES EN SOUFFLERIE AU C.S.T.B. FEVRIER '93



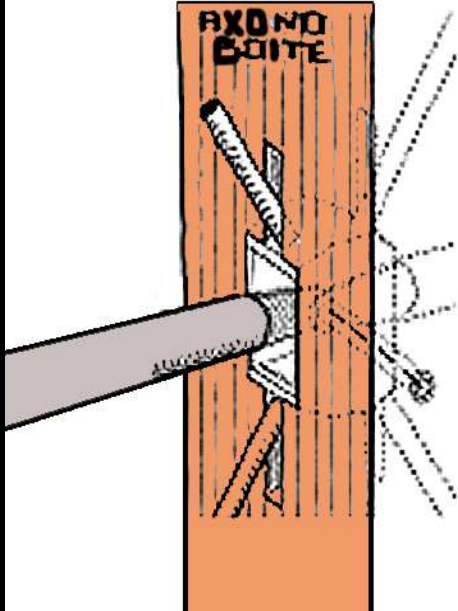




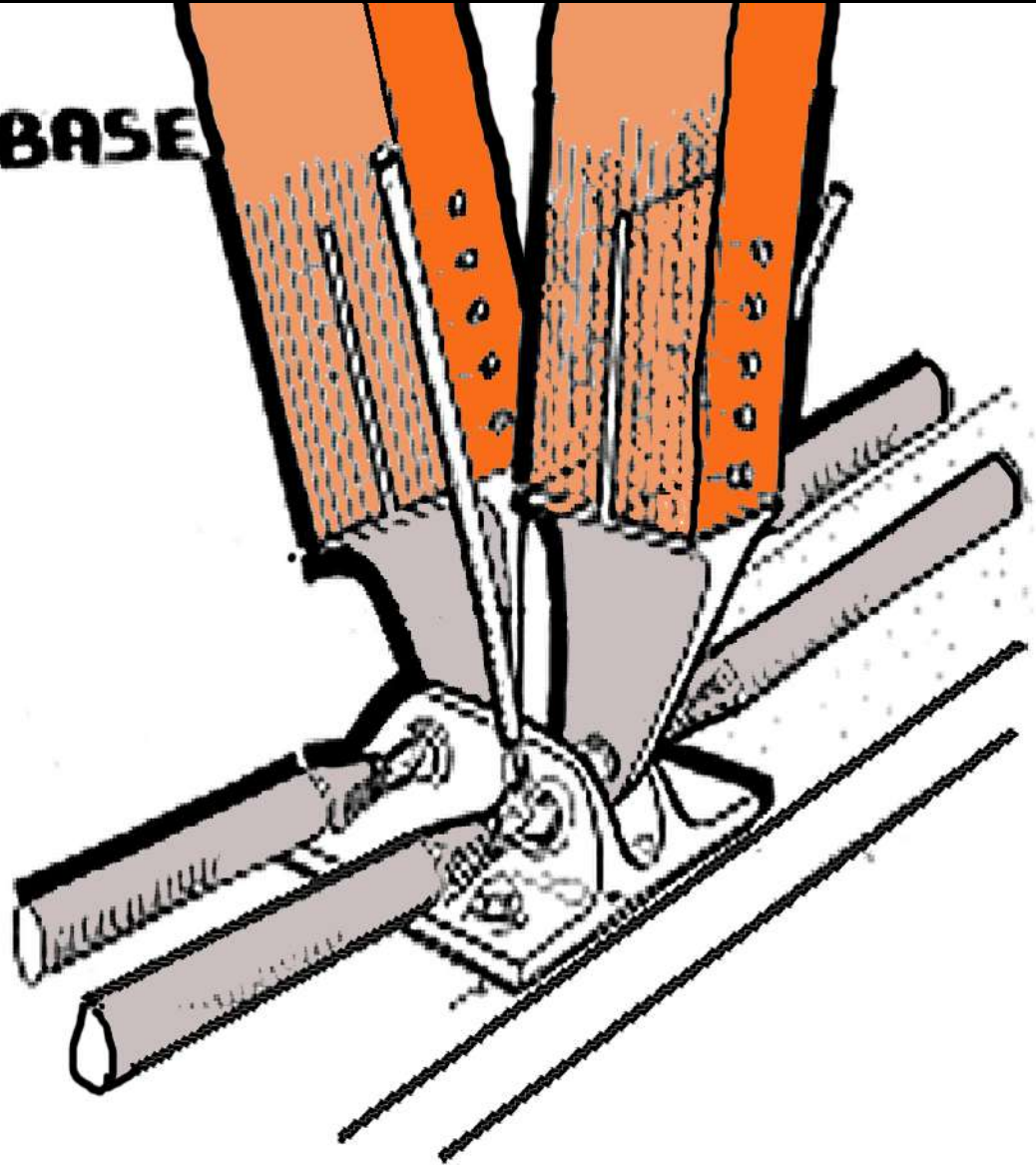
COURBE
ELEVATION

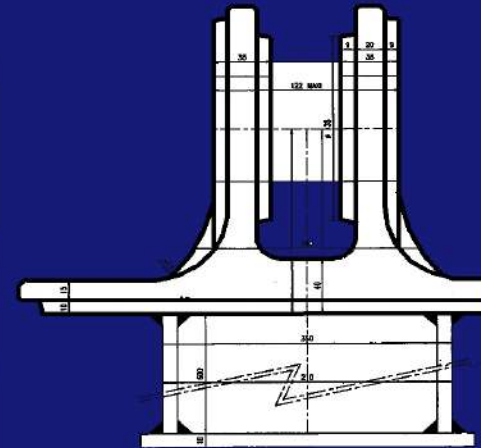
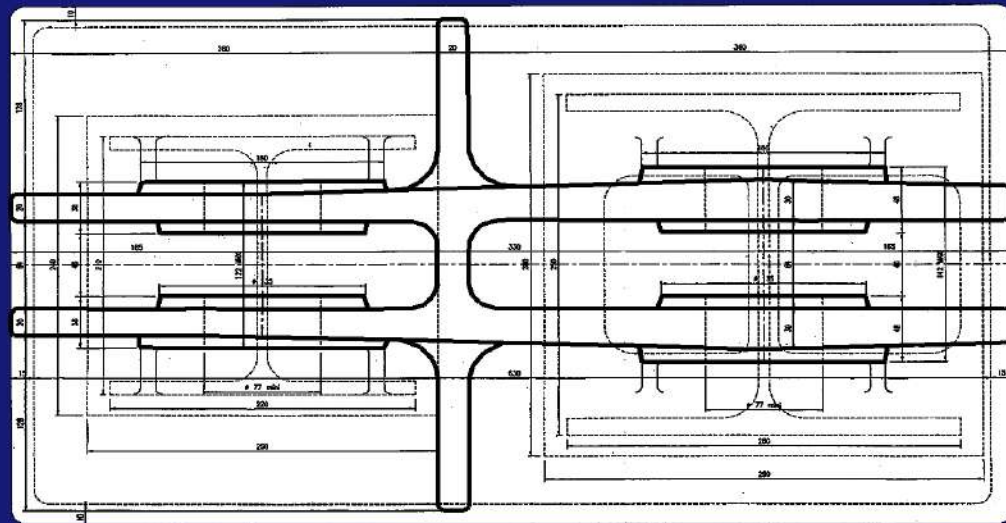
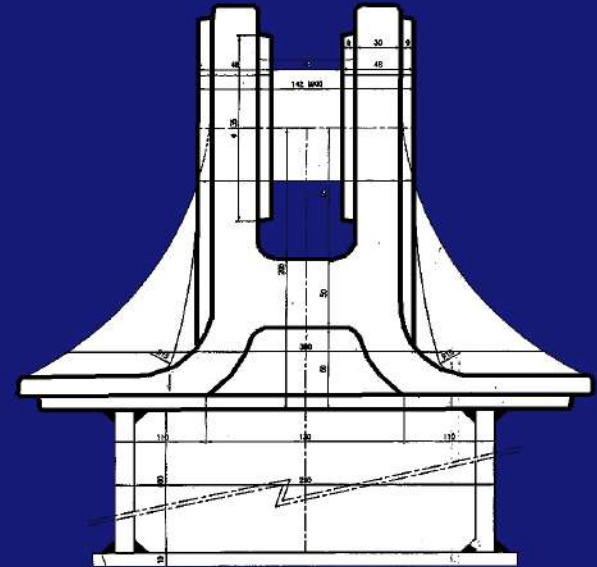
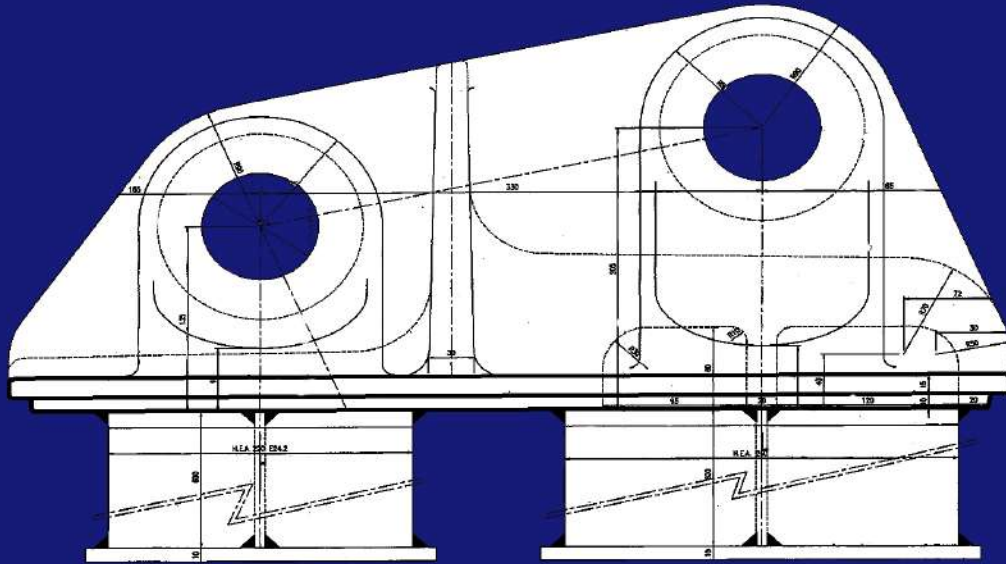


AXONOMETRIQUE

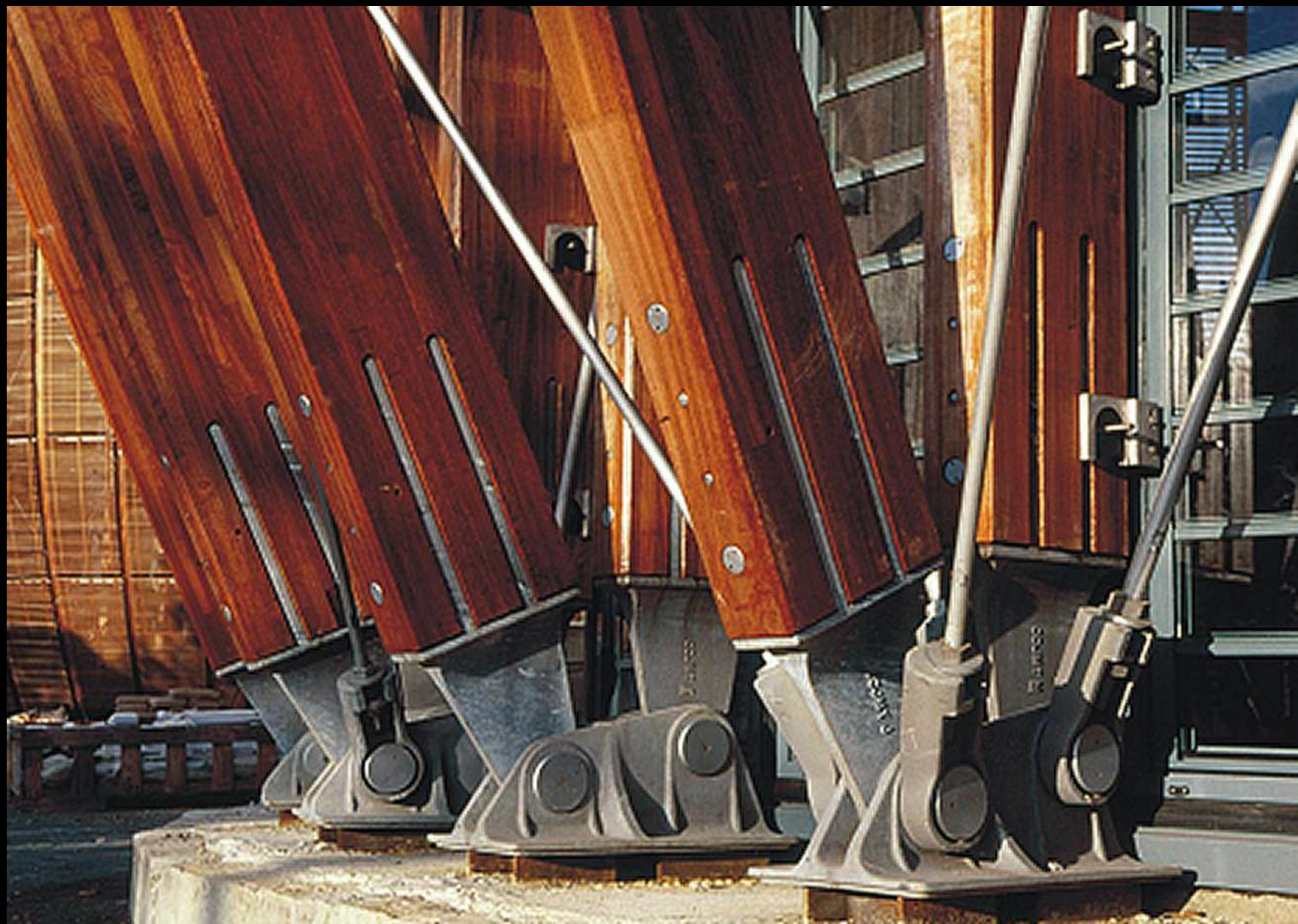


BASE











EXT

Arc

Boite

Bouton Arc/Arc

Cravate

Angle Facette
 8°18 Grande
 10° Moyenne
 12°05 Petite

Tirant

Tirant

Bouton Arc/Poteau

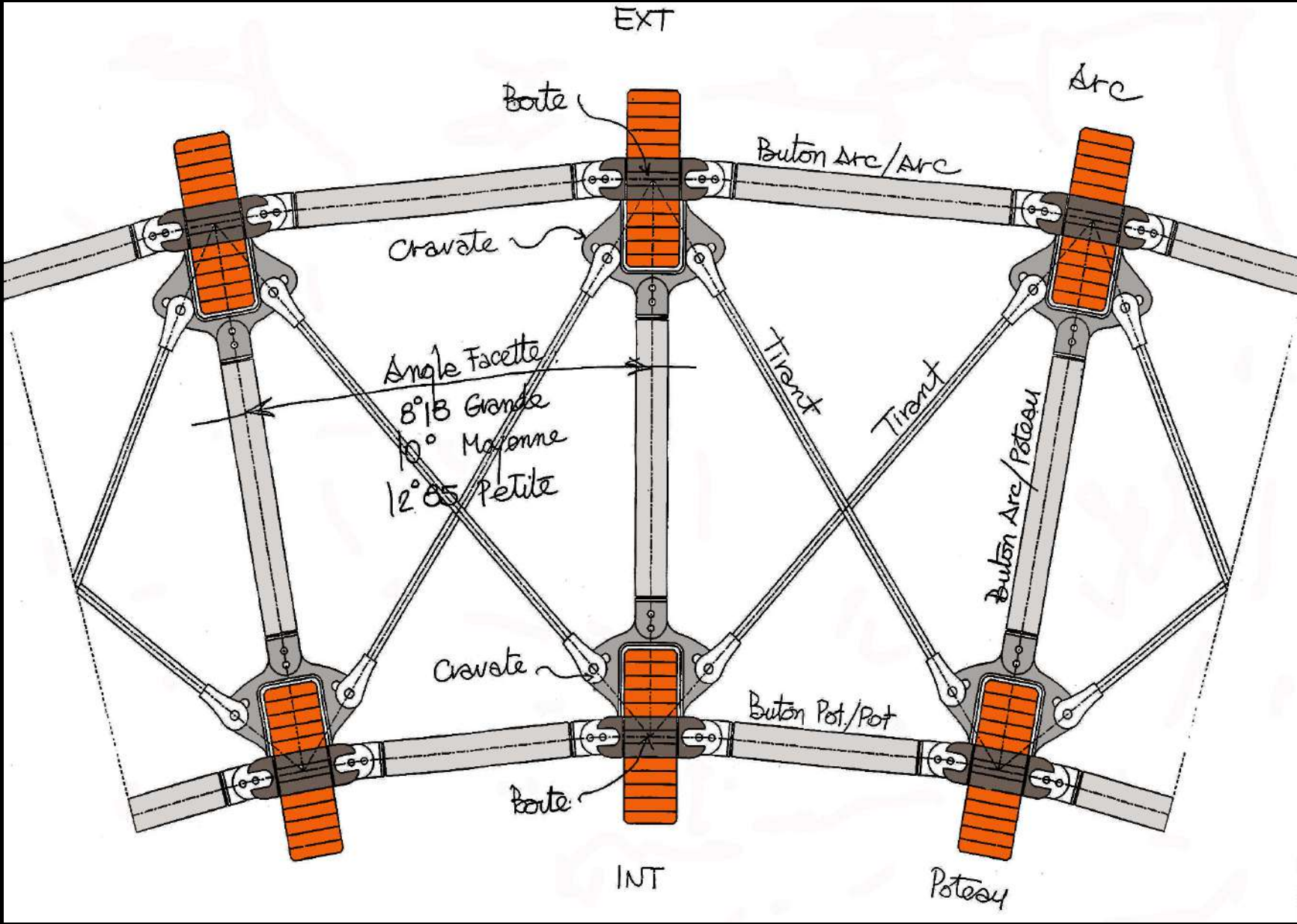
Cravate

Bouton Pot/Pot

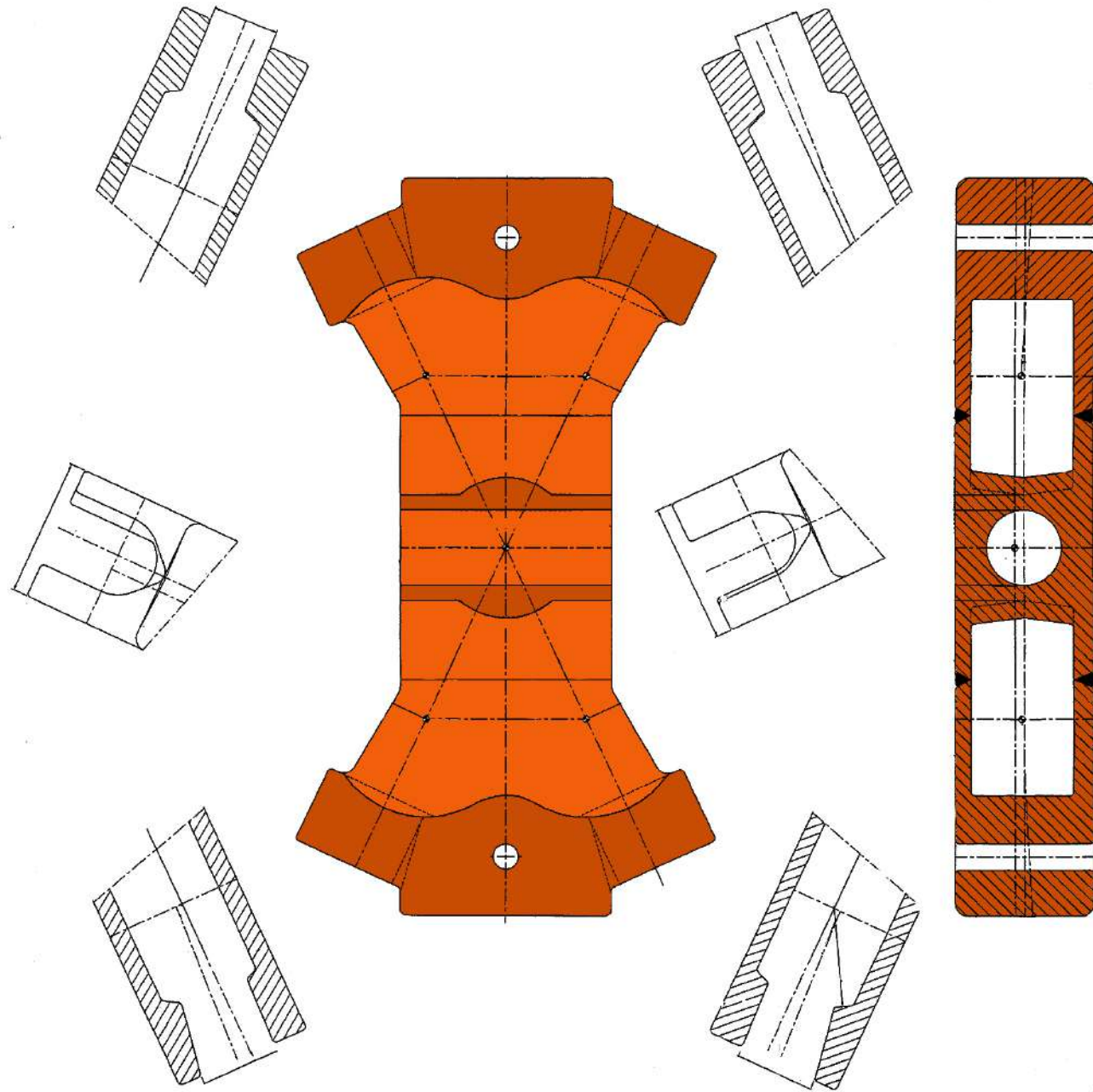
Boite

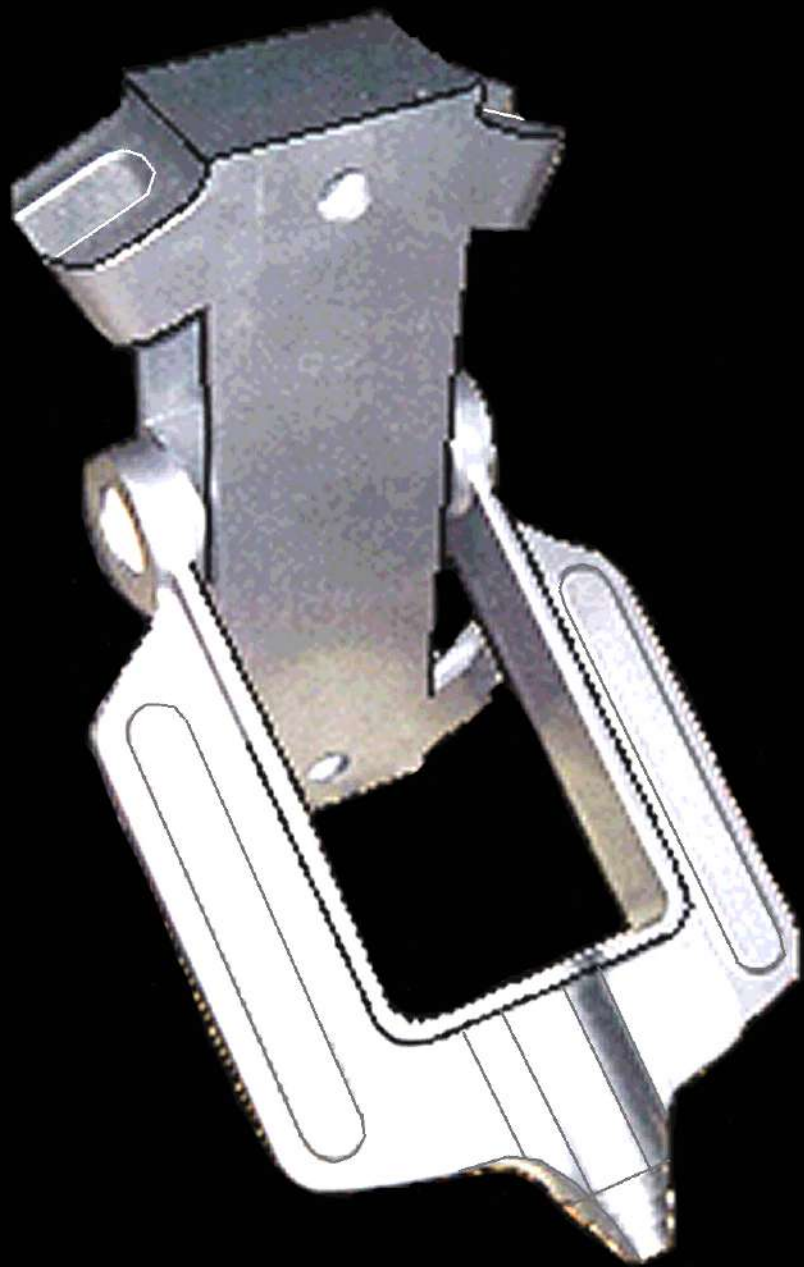
INT

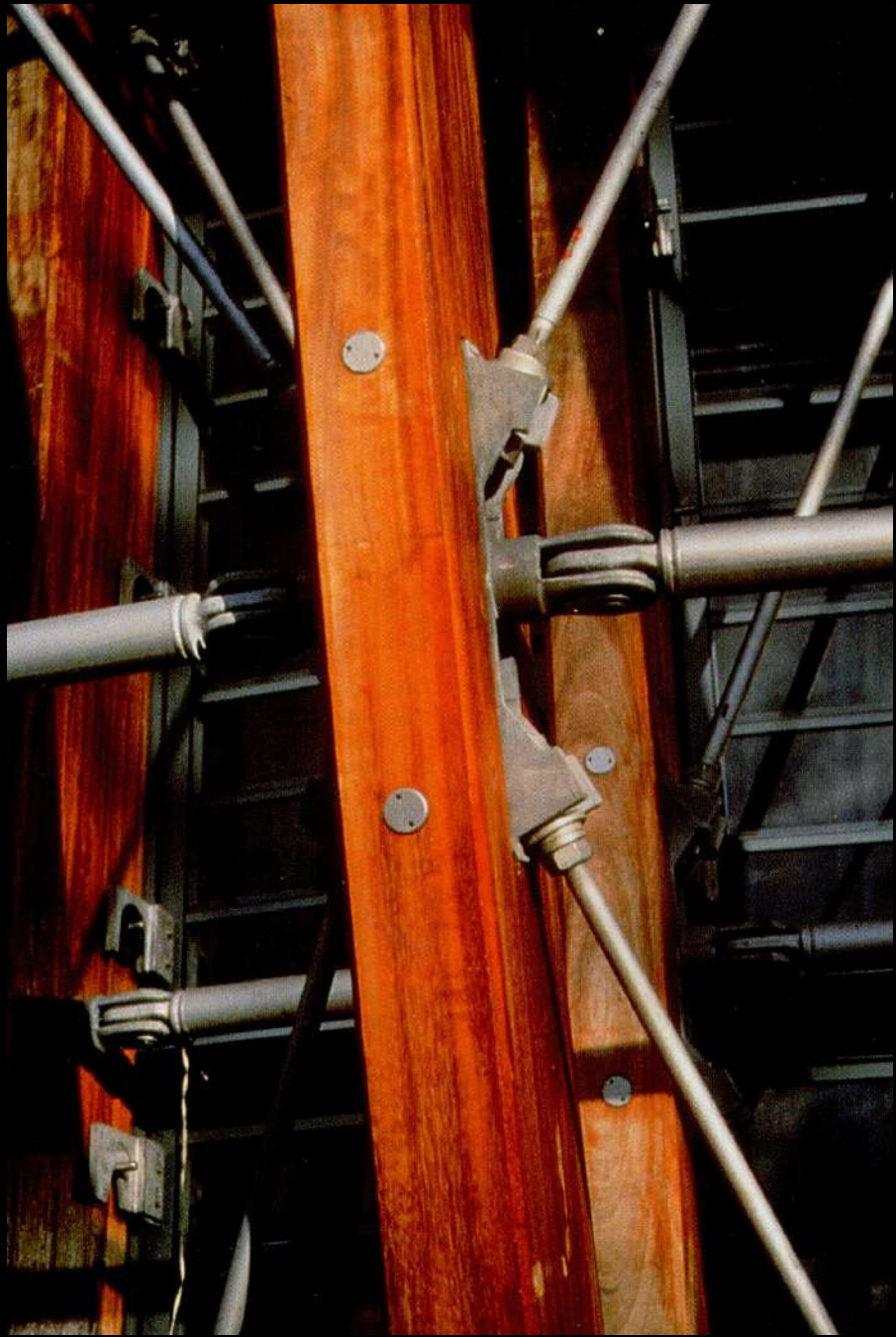
Poteau



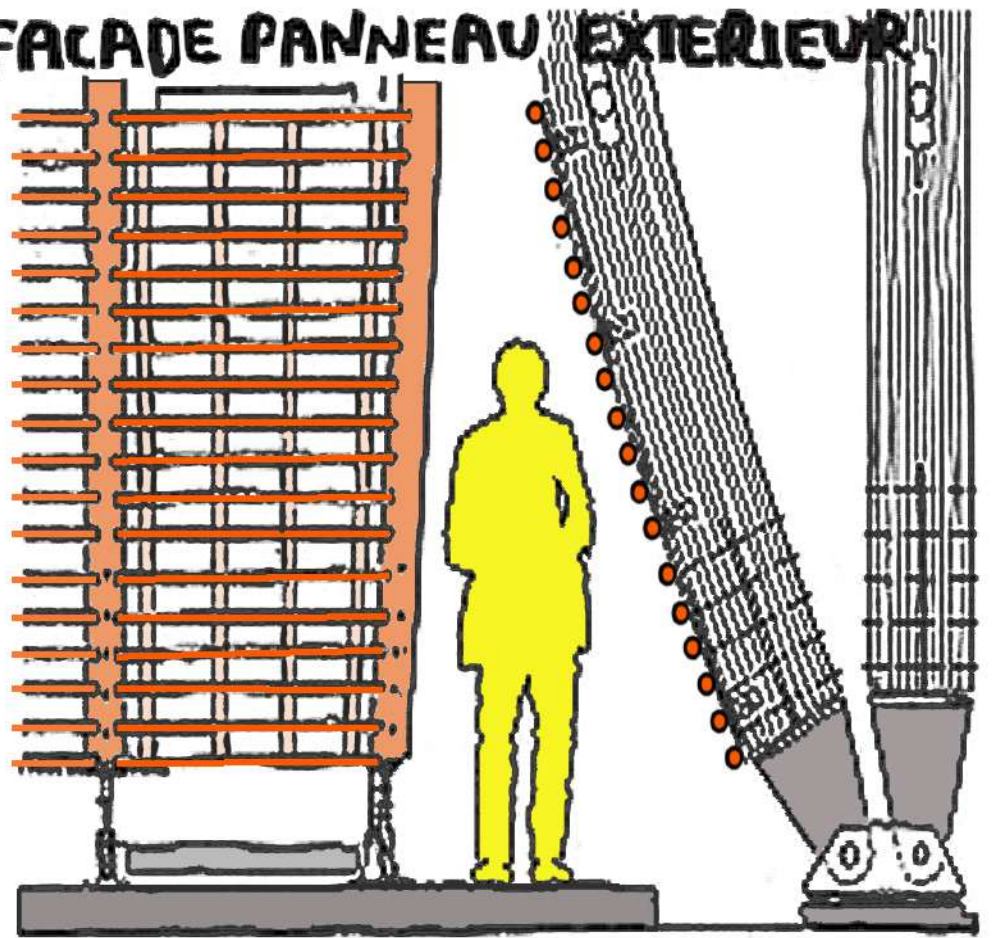
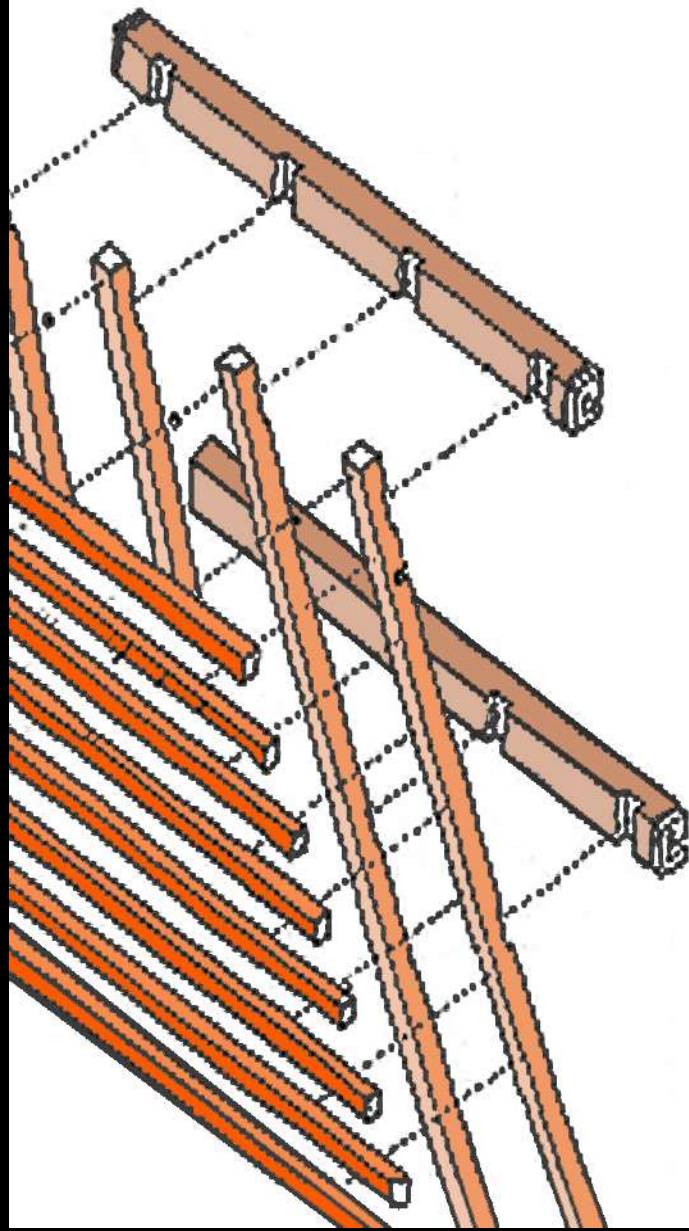




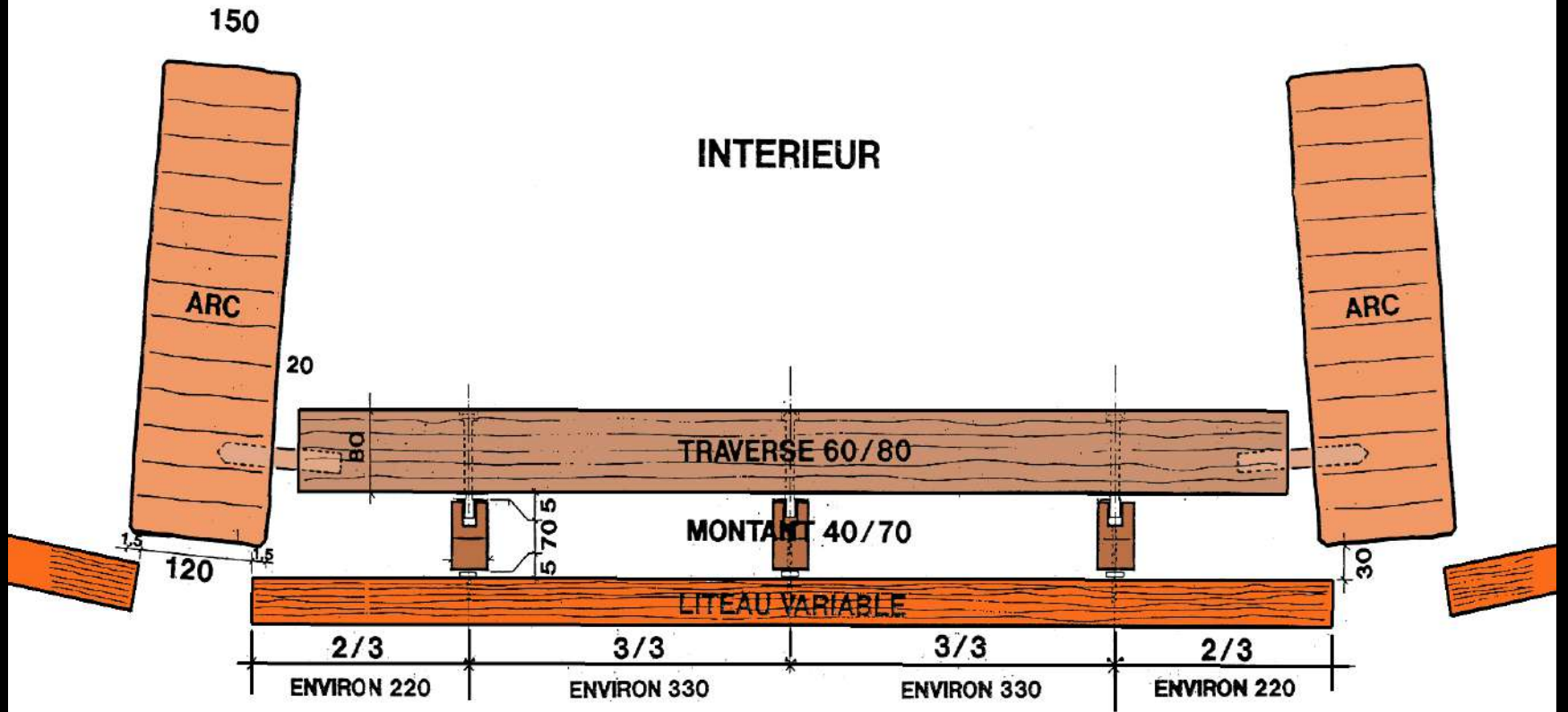


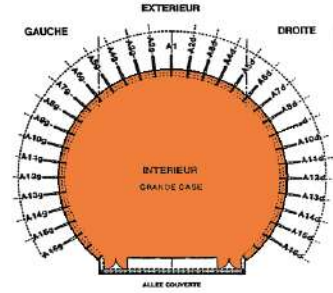


FACADE PANNEAU EXTERIEUR

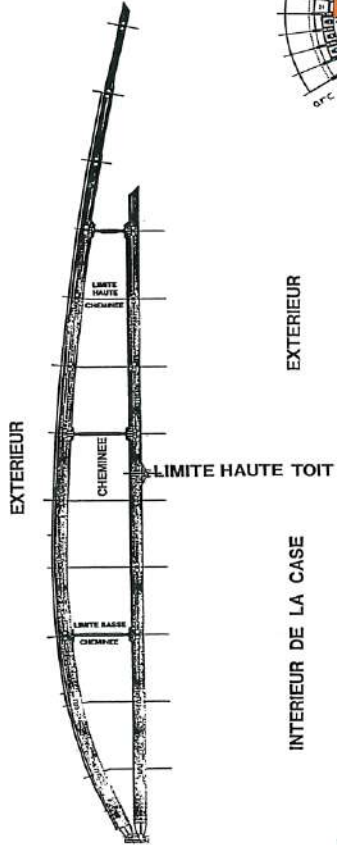


INTERIEUR



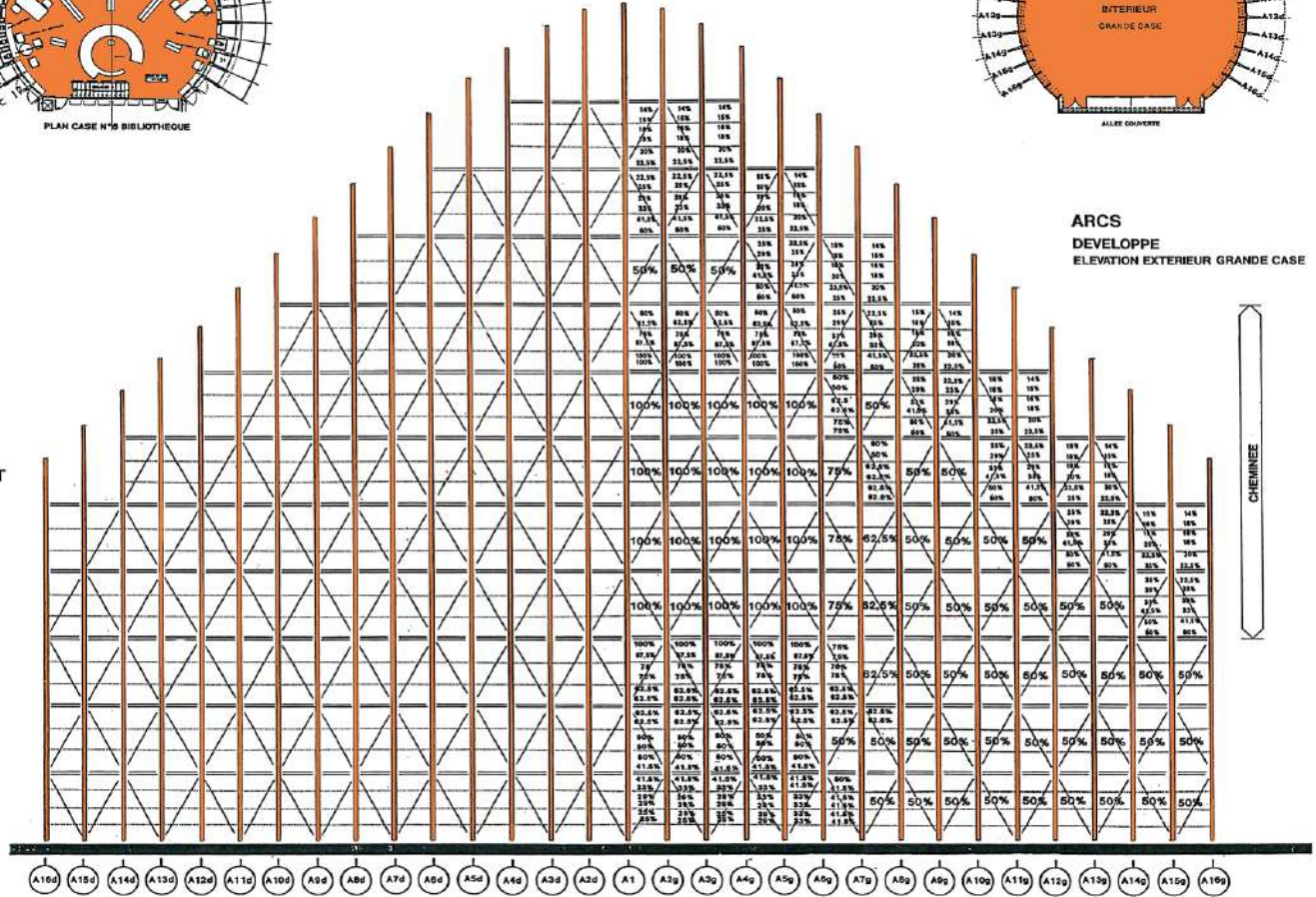


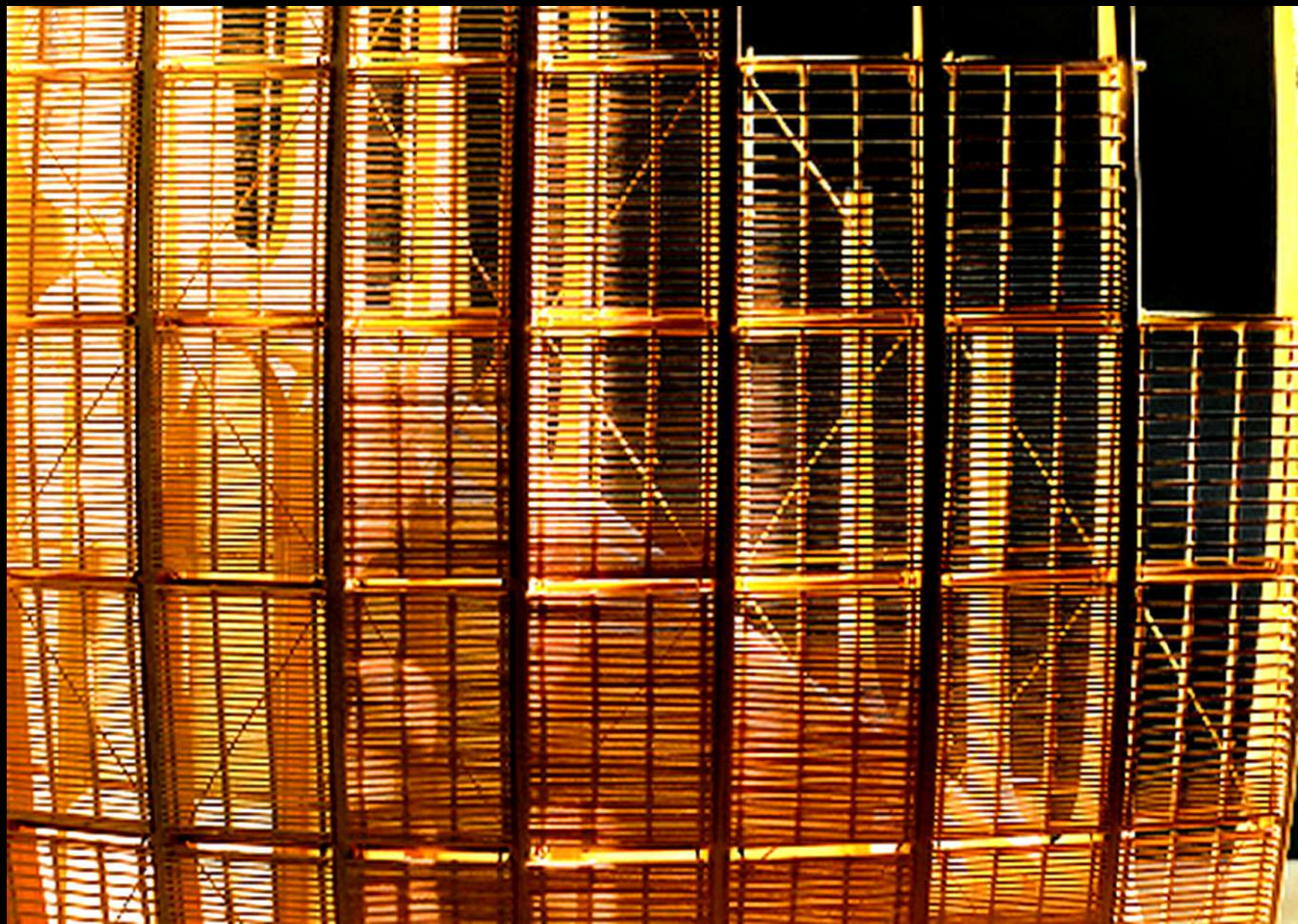
ARCS
DEVELOPPE
ELEVATION EXTERIEUR GRANDE CASE



EXTERIEUR

INTERIEUR DE LA CASE























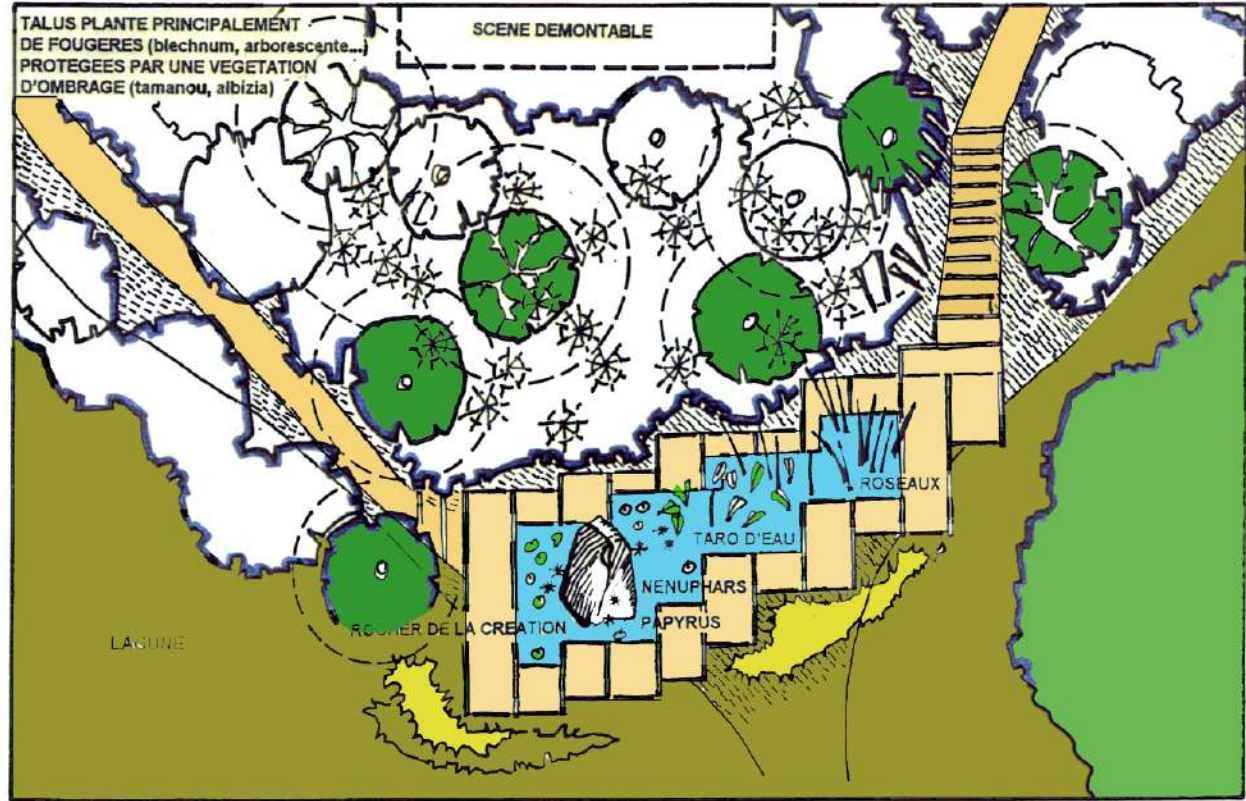








LES BASSINS: PHASE CHANTIER



NENUPHARS

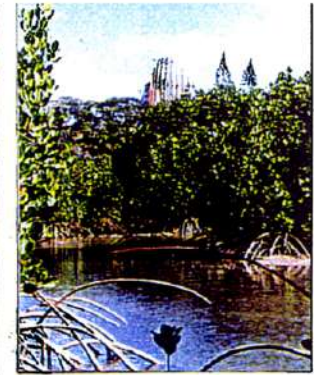
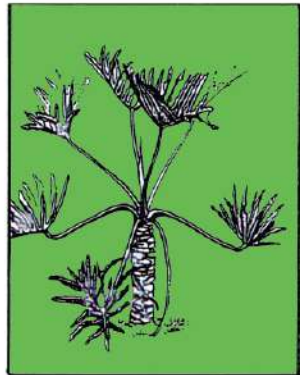
FOUGERE ARBORESCENTE

TARO SAUVAGE

ROSEAU

BARRINGTONIA

LAGUNE



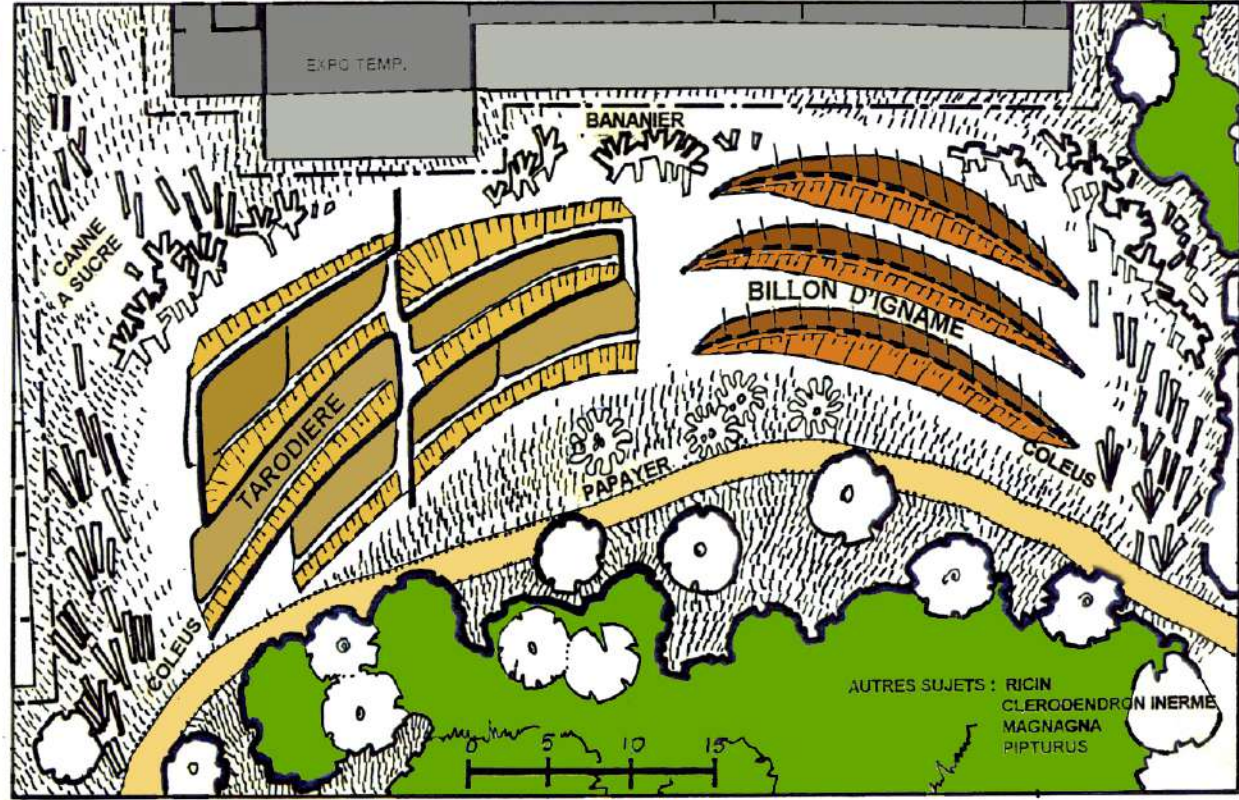


l'origine des êtres

Le site de la roche est un lieu de mémoire et de réflexion sur l'origine des êtres. Il est un lieu de rencontre entre le passé et le présent, entre la nature et l'homme.



Le site de la roche est un lieu de mémoire et de réflexion sur l'origine des êtres. Il est un lieu de rencontre entre le passé et le présent, entre la nature et l'homme.



BILLON D'IGNAMES



TARODIERE



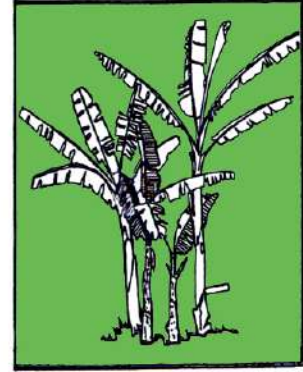
PERCHE SCULPTEE



CANNE A SUCRE



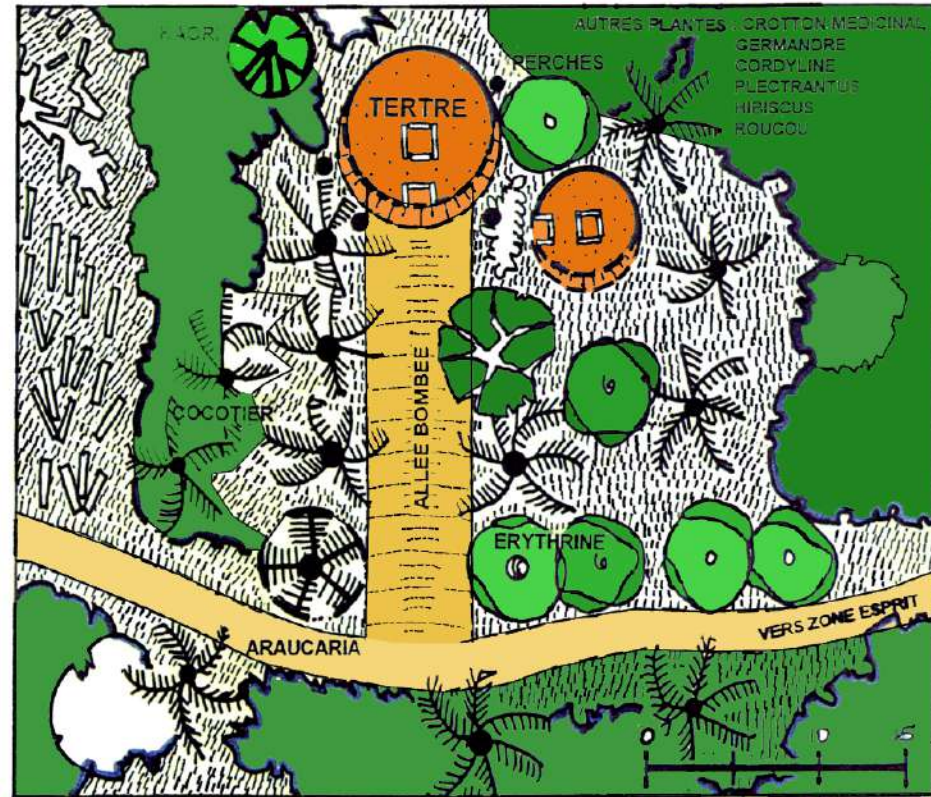
BANANIER







FABRICATION DU TERTRE

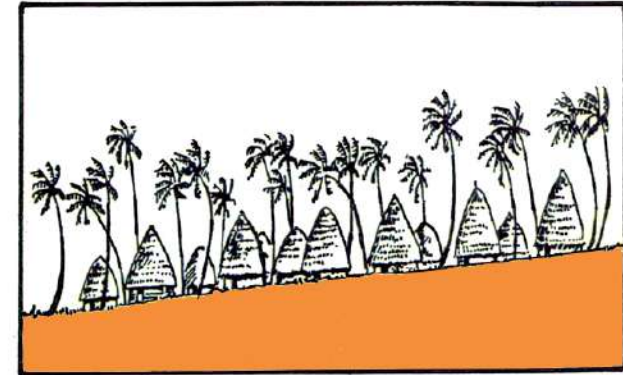


ARAUCARIA

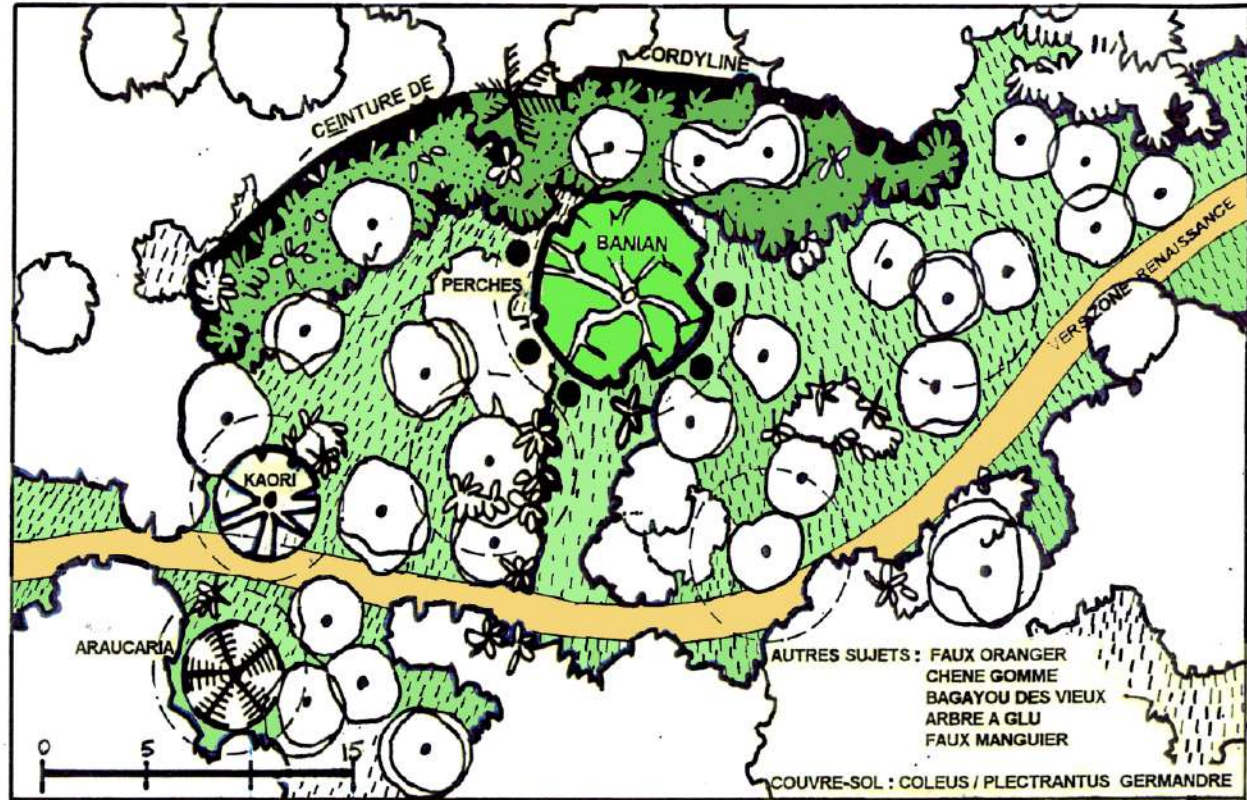
ERYTHRINE

CORDYLINE

COCOTIER







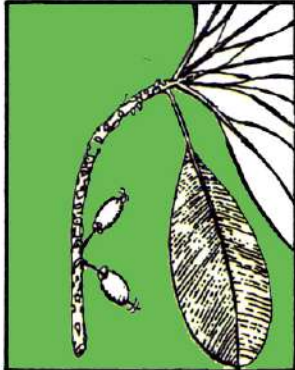
BANCOULIER

HOUP

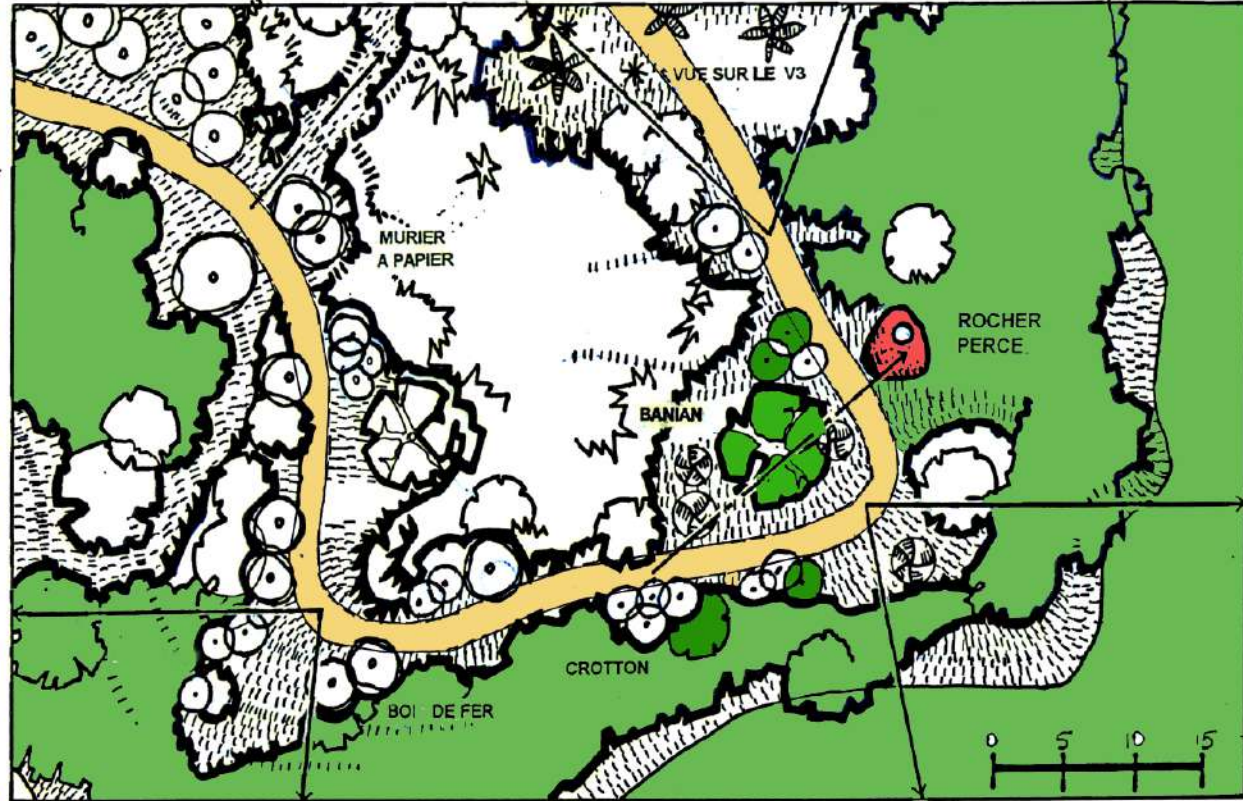
KAORI

PERCHE

BANIAN







BOIS DE FER



MURIER A PAPIER



CROTON



CHANTIER





SITE D'EXTRACTION



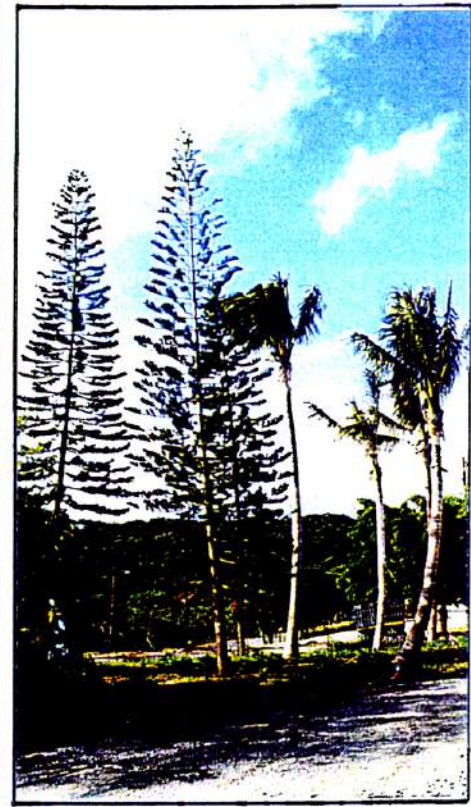
ARRIVEE SUR LE CHANTIER



1996 - AU VILLAGE 3



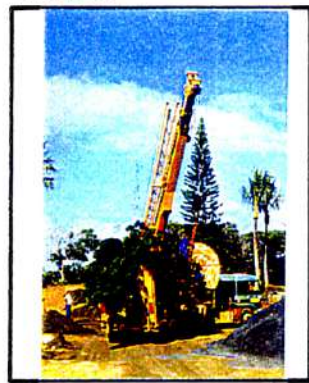
1996 - AU VILLAGE 1



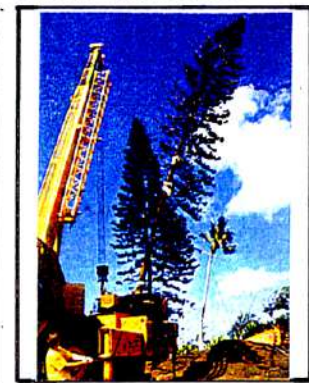
SITE D'EXTRACTION



CHANTIER



TRANSPLANTATION EN COURS



LA MOTTE



ARAUCARIAS COLUMNARIS & MONTANA



JEUNES SUJETS EN PEPINIERE















Cases et générations
CC TJBAOU



